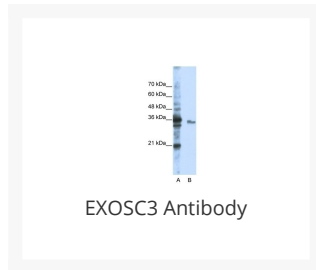




EXOSC3 Antibody

Cat. No.: 29-225



Ψ Specifications

HOST SPECIES:	Rabbit
SPECIES REACTIVITY:	Dog, Human, Mouse, Rat
IMMUNOGEN:	Antibody produced in rabbits immunized with a synthetic peptide corresponding a region of human EXOSC3.
TESTED APPLICATIONS:	ELISA, IHC, WB
APPLICATIONS:	EXOSC3 antibody can be used for detection of EXOSC3 by ELISA at 1:312500. EXOSC3 antibody can be used for detection of EXOSC3 by western blot at 1.0 μ g/mL, and HRP conjugated secondary antibody should be diluted 1:50,000 - 100,000.
POSITIVE CONTROL:	1) Cat. No. 1205 - Jurkat Cell Lysate
PREDICTED MOLECULAR WEIGHT:	30 kDa, 17 kDa

PURIFICATION:	Antibody is purified by peptide affinity chromatography method.
CLONALITY:	Polyclonal
CONJUGATE:	Unconjugated
PHYSICAL STATE:	Liquid
BUFFER:	Purified antibody supplied in 1x PBS buffer with 0.09% (w/v) sodium azide and 2% sucrose.
CONCENTRATION:	batch dependent
STORAGE CONDITIONS:	For short periods of storage (days) store at 4 °C. For longer periods of storage, store EXOSC3 antibody at -20 °C. As with any antibody avoid repeat freeze-thaw cycles.

Additional Info

OFFICIAL SYMBOL:	EXOSC3
ALTERNATE NAMES:	EXOSC3, p10, PCH1B, RRP40, Rrp40p, CGI-102, hRrp-40, bA3J10.7, RP11-3J10.8
ACCESSION NO.:	NP_057126
PROTEIN GI NO.:	50511943
GENE ID:	51010
USER NOTE:	Optimal dilutions for each application to be determined by the researcher.

Background and References

BACKGROUND:	EXOSC3 is component of the exosome 3'->5' exoribonuclease complex and is required for the 3' processing of the 7S pre-RNA to the mature 5.8S rRNA.
REFERENCES:	1) Lehner, B. (2004) Genome Res. 14 (7), 1315-1323.

ANTIBODIES FOR RESEARCH USE ONLY.

For additional information, visit ProSci's [Terms & Conditions Page](#).