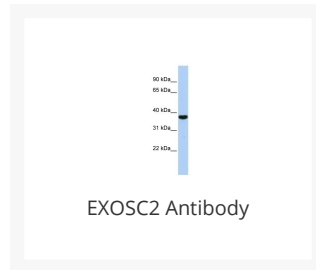




EXOSC2 Antibody

Cat. No.: 25-644



Ψ Specifications

HOST SPECIES:	Rabbit
SPECIES REACTIVITY:	Human, Mouse
IMMUNOGEN:	Antibody produced in rabbits immunized with a synthetic peptide corresponding a region of human EXOSC2.
TESTED APPLICATIONS:	ELISA, WB
APPLICATIONS:	EXOSC2 antibody can be used for detection of EXOSC2 by ELISA at 1:62500. EXOSC2 antibody can be used for detection of EXOSC2 by western blot at 1 µg/mL, and HRP conjugated secondary antibody should be diluted 1:50,000 - 100,000.
POSITIVE CONTROL:	1) Cat. No. 1211 - HepG2 Cell Lysate
PREDICTED MOLECULAR WEIGHT:	32 kDa

Ψ Properties

PURIFICATION:	Antibody is purified by peptide affinity chromatography method.
CLONALITY:	Polyclonal
CONJUGATE:	Unconjugated
PHYSICAL STATE:	Liquid

BUFFER:	Purified antibody supplied in 1x PBS buffer with 0.09% (w/v) sodium azide and 2% sucrose.
CONCENTRATION:	batch dependent
STORAGE CONDITIONS:	For short periods of storage (days) store at 4 °C. For longer periods of storage, store EXOSC2 antibody at -20 °C. As with any antibody avoid repeat freeze-thaw cycles.

Additional Info

OFFICIAL SYMBOL:	EXOSC2
ALTERNATE NAMES:	EXOSC2, RRP4, Rrp4p, hRrp4p, p7
ACCESSION NO.:	NP_055100
PROTEIN GI NO.:	19923403
GENE ID:	23404
USER NOTE:	Optimal dilutions for each application to be determined by the researcher.

Background and References

BACKGROUND:	EXOSC2 belongs to the exosome, a RNA-processing complex, which is at least involved in the 3' processing of the 7S pre-rRNA to the mature 5.8S rRNA. It exhibits a 3'-5' exoribonuclease activity.
REFERENCES:	1) van (2007) RNA 13 (7), 1027-1035.

ANTIBODIES FOR RESEARCH USE ONLY.

For additional information, visit ProSci's [Terms & Conditions Page](#).