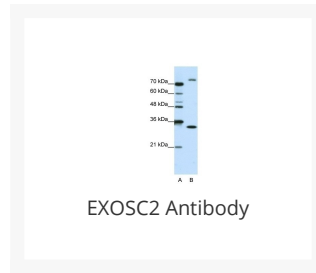




# EXOSC2 Antibody

Cat. No.: 29-419



## Ψ Specifications

<b>HOST SPECIES:</b>	Rabbit
<b>SPECIES REACTIVITY:</b>	Human
<b>IMMUNOGEN:</b>	Antibody produced in rabbits immunized with a synthetic peptide corresponding a region of human EXOSC2.
<b>TESTED APPLICATIONS:</b>	ELISA, WB
<b>APPLICATIONS:</b>	EXOSC2 antibody can be used for detection of EXOSC2 by ELISA at 1:1562500. EXOSC2 antibody can be used for detection of EXOSC2 by western blot at 1.25 µg/mL, and HRP conjugated secondary antibody should be diluted 1:50,000 - 100,000.
<b>POSITIVE CONTROL:</b>	1) Cat. No. 1205 - Jurkat Cell Lysate
<b>PREDICTED MOLECULAR WEIGHT:</b>	32 kDa

## Ψ Properties

<b>PURIFICATION:</b>	Antibody is purified by protein A chromatography method.
<b>CLONALITY:</b>	Polyclonal
<b>CONJUGATE:</b>	Unconjugated
<b>PHYSICAL STATE:</b>	Liquid

<b>BUFFER:</b>	Purified antibody supplied in 1x PBS buffer with 0.09% (w/v) sodium azide and 2% sucrose.
<b>CONCENTRATION:</b>	batch dependent
<b>STORAGE CONDITIONS:</b>	For short periods of storage (days) store at 4 °C. For longer periods of storage, store EXOSC2 antibody at -20 °C. As with any antibody avoid repeat freeze-thaw cycles.

## Additional Info

<b>OFFICIAL SYMBOL:</b>	EXOSC2
<b>ALTERNATE NAMES:</b>	EXOSC2, p7, RRP4, Rrp4p, hRrp4p
<b>ACCESSION NO.:</b>	NP_055100
<b>PROTEIN GI NO.:</b>	19923403
<b>GENE ID:</b>	23404
<b>USER NOTE:</b>	Optimal dilutions for each application to be determined by the researcher.

## Background and References

<b>BACKGROUND:</b>	EXOSC2 belongs to the exosome, a RNA-processing complex, which is at least involved in the 3' processing of the 7S pre-rRNA to the mature 5.8S rRNA. It exhibits a 3'-5' exoribonuclease activity.
<b>REFERENCES:</b>	1) Beausoleil, S.A., (2004) Proc. Natl. Acad. Sci. U.S.A. 101 (33), 12130-12135.

### ANTIBODIES FOR RESEARCH USE ONLY.

For additional information, visit ProSci's [Terms & Conditions Page](#).