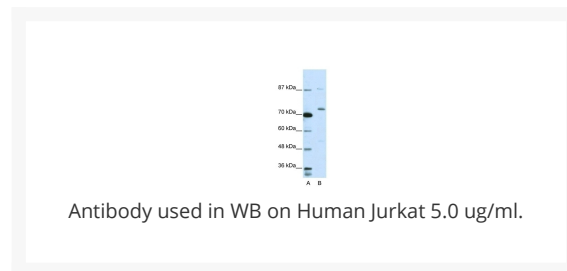




EXOSC10 Antibody

Cat. No.: 29-224



Ψ Specifications

HOST SPECIES:	Rabbit
SPECIES REACTIVITY:	Human
IMMUNOGEN:	Antibody produced in rabbits immunized with a synthetic peptide corresponding a region of human EXOSC10.
TESTED APPLICATIONS:	ELISA, IHC, WB
APPLICATIONS:	EXOSC10 antibody can be used for detection of EXOSC10 by ELISA at 1:62500. EXOSC10 antibody can be used for detection of EXOSC10 by western blot at 5.0 µg/mL, and HRP conjugated secondary antibody should be diluted 1:50,000 - 100,000.
POSITIVE CONTROL:	1) Cat. No. 1205 - Jurkat Cell Lysate
PREDICTED MOLECULAR WEIGHT:	97 kDa, 98 kDa

PURIFICATION:	Antibody is purified by protein A chromatography method.
CLONALITY:	Polyclonal
CONJUGATE:	Unconjugated
PHYSICAL STATE:	Liquid
BUFFER:	Purified antibody supplied in 1x PBS buffer with 0.09% (w/v) sodium azide and 2% sucrose.
CONCENTRATION:	batch dependent
STORAGE CONDITIONS:	For short periods of storage (days) store at 4 °C. For longer periods of storage, store EXOSC10 antibody at -20 °C. As with any antibody avoid repeat freeze-thaw cycles.

Additional Info

OFFICIAL SYMBOL:	EXOSC10
ALTERNATE NAMES:	EXOSC10, p2, p3, p4, RRP6, PMSCL, Rrp6p, PM-Scl, PMSCL2, PM/Scl-100
ACCESSION NO.:	NP_001001998
PROTEIN GI NO.:	50301240
GENE ID:	5394
USER NOTE:	Optimal dilutions for each application to be determined by the researcher.

Background and References

BACKGROUND:	EXOSC10 contains 1 HRDC domain and 1 3'-5' exonuclease domain. Antibodies against PM/SCL are found in patients with polymyositis and/or scleroderma.
REFERENCES:	1) Lehner, B. (2004) Genome Res. 14 (7), 1315-1323.

ANTIBODIES FOR RESEARCH USE ONLY.

For additional information, visit ProSci's [Terms & Conditions Page](#).