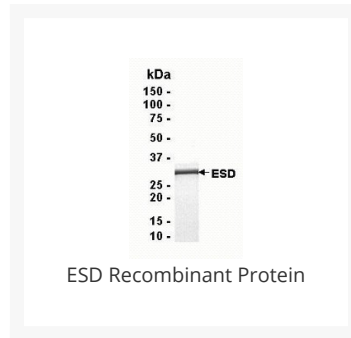




ESD Recombinant Protein

Cat. No.: XW-RP3079



Ψ Specifications

SPECIES:	Human
SOURCE SPECIES:	E. coli
SEQUENCE:	aa. 1-282
TESTED APPLICATIONS:	ELISA, MS, WB
APPLICATIONS:	This recombinant protein can be used for WB, ELISA, MS.
PREDICTED MOLECULAR WEIGHT:	32.4 kDa (Calculated)

Ψ Properties

PURITY:	95%
PHYSICAL STATE:	Liquid
BUFFER:	10 mM Tris, pH 8.0, 0.1% Triton X-100, 0.002% NaN ₃
STORAGE CONDITIONS:	Store in working aliquots at -70 °C. Avoid freeze/thaw cycles. When working with proteins care should be taken to keep recombinant protein at a cool and stable temperature.

OFFICIAL SYMBOL:	ESD
ALTERNATE NAMES:	FGH, S-formylglutathione hydrolase, Esterase D, FGH
ACCESSION NO.:	NP_001975
PROTEIN GI NO.:	33413400
GENE ID:	2098

Background and References

BACKGROUND:	A carboxylic ester + H ₂ O = an alcohol + a carboxylic anion. Homodimer. Cytoplasmic vesicles. There are two major electrophoretic isotypes. The sequence of the ESD*1 variant is shown. Similar to yeast HRE299.
--------------------	--

ANTIBODIES FOR RESEARCH USE ONLY.

For additional information, visit ProSci's [Terms & Conditions Page](#).