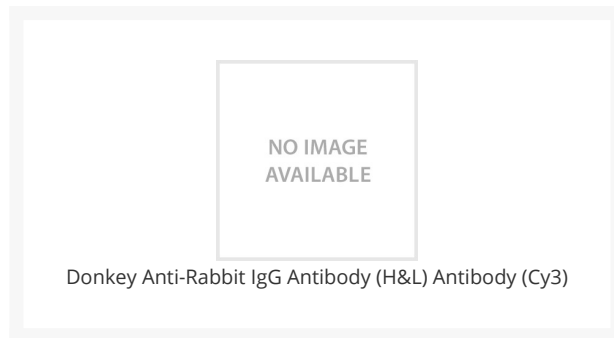




Donkey Anti-Rabbit IgG Antibody (H&L) Antibody (Cy3)

Cat. No.: XG-6157Cy3



Ψ Specifications

HOST SPECIES:	Donkey
SPECIES REACTIVITY:	Rabbit
IMMUNOGEN:	Purified rabbit IgG.
TARGET SPECIES:	Rabbit
TESTED APPLICATIONS:	ELISA, ICC, IHC, WB
APPLICATIONS:	This antibody can be used at 1:100-1:2000 for most IHC/ICC applications. Customers need to optimize the dilutions in their system.
SPECIFICITY:	This conjugate specifically reacts with rabbit IgG with minimal cross-reaction to IgG of other mammalian species.

Ψ Properties

ISOTYPE:	IgG
CONJUGATE:	Cy3
PHYSICAL STATE:	Liquid

BUFFER:	Buffer containing 0.01M sodium phosphate, 0.25M sodium chloride, pH 7.6 and 25% glycerol.
STORAGE CONDITIONS:	Store 2 - 8 °C as an undiluted liquid for several weeks. After dilution, do not use for more than one day. -20 °C for up to one year.

ANTIBODIES FOR RESEARCH USE ONLY.

For additional information, visit ProSci's [Terms & Conditions Page](#).