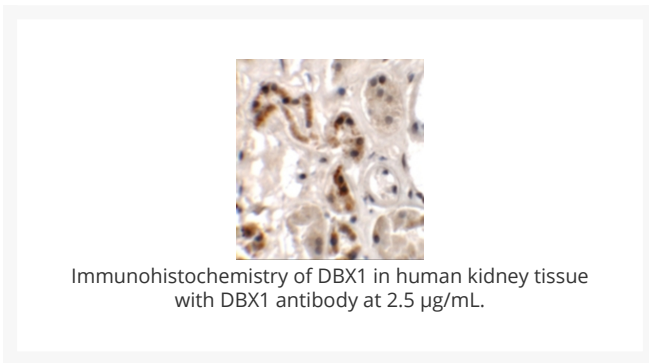
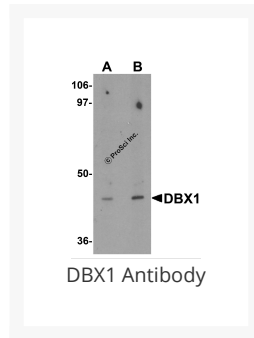




# DBX1 Antibody

Cat. No.: 6455



## $\Psi$ Specifications

<b>HOST SPECIES:</b>	Rabbit
<b>SPECIES REACTIVITY:</b>	Human, Mouse, Rat
<b>HOMOLOGY:</b>	Predicted species reactivity based on immunogen sequence: Bovine: (87%)
<b>IMMUNOGEN:</b>	DBX1 antibody was raised against a 15 amino acid synthetic peptide near the center of human DBX1.  The immunogen is located within amino acids 100 - 150 of DBX1.
<b>TESTED APPLICATIONS:</b>	ELISA, IF, IHC-P, WB

<b>APPLICATIONS:</b>	DBX1 antibody can be used for detection of DBX1 by Western blot at 1 - 2 µg/mL. Antibody can also be used for immunohistochemistry starting at 2.5 µg/mL. For immunofluorescence start at 20 µg/mL.  Antibody validated: Western Blot in mouse samples; Immunohistochemistry in human samples and Immunofluorescence in human samples. All other applications and species not yet tested.
<b>SPECIFICITY:</b>	BX1 antibody is predicted to not cross-react with other DBX protein family members
<b>POSITIVE CONTROL:</b>	1) Cat. No. 1405 - Mouse Kidney Tissue Lysate
	2) Cat. No. 10-401 - Human Kidney Tissue Slide

## Ψ Properties

<b>PURIFICATION:</b>	DBX1 Antibody is affinity chromatography purified via peptide column.
<b>CLONALITY:</b>	Polyclonal
<b>ISOTYPE:</b>	IgG
<b>CONJUGATE:</b>	Unconjugated
<b>PHYSICAL STATE:</b>	Liquid
<b>BUFFER:</b>	DBX1 Antibody is supplied in PBS containing 0.02% sodium azide.
<b>CONCENTRATION:</b>	1 mg/mL
<b>STORAGE CONDITIONS:</b>	DBX1 antibody can be stored at 4 °C for three months and -20 °C, stable for up to one year. As with all antibodies care should be taken to avoid repeated freeze thaw cycles. Antibodies should not be exposed to prolonged high temperatures.

## Ψ Additional Info

<b>OFFICIAL SYMBOL:</b>	DBX1
<b>ALTERNATE NAMES:</b>	DBX1 Antibody: Homeobox protein DBX1, Developing brain homeobox protein 1
<b>ACCESSION NO.:</b>	NP_001025036
<b>PROTEIN GI NO.:</b>	304434796
<b>GENE ID:</b>	120237
<b>USER NOTE:</b>	Optimal dilutions for each application to be determined by the researcher.

## Ψ Background and References

<b>BACKGROUND:</b>	DBX1 Antibody: DBX1 is implicated in patterning the central nervous system during embryogenesis. DBX1 homeodomain transcription factor is expressed in progenitors which are critical in establishing cell fate allocation and cell diversity. DBX1 has a key role in regulating the distinct phenotypic features that distinguish two major classes of ventral interneurons, V0 and V1 neurons. DBX1-derived neurons are essential for the transgenic expression and generation of respiratory behavior both in vitro and in vivo.
<b>REFERENCES:</b>	1) Griveau A, Borello U, Causeret F, et al. A novel role for Dbx1-derived Cajal-Retzius cells in early regionalization of the cerebral cortical neuroepithelium. PLoS Biol. 2010; 8(7):e1000440
	2) Causeret F, Ensini M, Teissier A, et al. Dbx1-expressing cells are necessary for the survival of the Mammalian anterior neural and craniofacial structures. PLoS One 2011; 6:e19367.
	3) Pierani A, Moran-Rivard L, Sunshine MJ, et al. Control of interneuron fate in the developing spinal cord by the progenitor homeodomain protein Dbx1. Neuron 2001; 29:367-84
	4) Gray PA, Hayes JA, Ling GY, et al. Developmental origin of preBotzinger complex respiratory neurons. J. Neurosci. 2010; 30:14883-95.

**ANTIBODIES FOR RESEARCH USE ONLY.**

For additional information, visit ProSci's [Terms & Conditions Page](#).