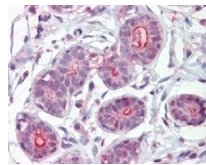
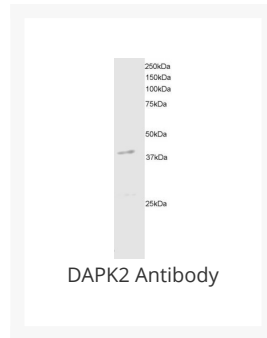




DAPK2 Antibody

Cat. No.: 45-047



45-047 (2.5ug/ml) staining of paraffin embedded Human Breast. Steamed antigen retrieval with citrate buffer pH 6, AP-staining.

Ψ Specifications

HOST SPECIES:	Goat
SPECIES REACTIVITY:	Human, Mouse
HOMOLOGY:	Expected Species Reactivity based on sequence homology: Rat, Dog, Pig
IMMUNOGEN:	The immunogen for this antibody is: C-KALHPRRRSSTS
TESTED APPLICATIONS:	ELISA, IHC, WB
APPLICATIONS:	Peptide ELISA: antibody detection limit dilution 1:32000. Western Blot: Approx 40-45kDa bands seen in mouse brain extracts. Recommended for use at 1-3ug/ml. Immunohistochemistry: Immunohistochemistry: Paraffin embedded Human Breast and Thyroid. Recommended concentration: 2.5ug/ml.
SPECIFICITY:	#To_Delete#.
POSITIVE CONTROL:	1) Cat. No. 1403 - Mouse Brain Tissue Lysate

PURIFICATION:	Purified from goat serum by ammonium sulphate precipitation followed by antigen affinity chromatography using the immunizing peptide.
CLONALITY:	Polyclonal
CONJUGATE:	Unconjugated
PHYSICAL STATE:	Liquid
BUFFER:	Supplied at 0.5 mg/ml in Tris saline, 0.02% sodium azide, pH7.3 with 0.5% bovine serum albumin. Aliquot and store at -20°C. Minimize freezing and thawing.
CONCENTRATION:	500 ug/mL
STORAGE CONDITIONS:	Aliquot and store at -20 °C. Minimize freezing and thawing.

Ψ Additional Info

OFFICIAL SYMBOL:	DAPK2
ALTERNATE NAMES:	DAPK2, death-associated protein kinase 2, DRP-1, DRP1, MGC119312, DAP kinase 2, DAP-kinase-related protein 1, OTTHUMP00000163874, death-associated kinase 2
ACCESSION NO.:	NP_055141.2
PROTEIN GI NO.:	14670383
GENE ID:	23604

Ψ Background and References

REFERENCES:	1) Kawai T, Nomura F, Hoshino K, Copeland NG, Gilbert DJ, Jenkins NA, Akira S. Death-associated protein kinase 2 is a new calcium/calmodulin-dependent protein kinase that signals apoptosis through its catalytic activity. <i>Oncogene</i> 1999 Jun 10;18(23):3471-80
--------------------	---

ANTIBODIES FOR RESEARCH USE ONLY.

For additional information, visit ProSci's [Terms & Conditions Page](#).