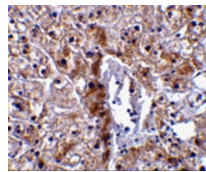
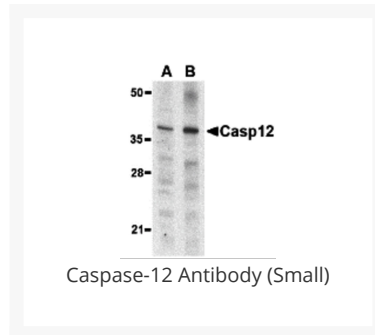




Caspase-12 Antibody (Small)

Cat. No.: 3197



Immunohistochemical staining of human liver tissue using caspase-12 antibody (small) at 10 µg/mL.

Ψ Specifications

HOST SPECIES:	Rabbit
SPECIES REACTIVITY:	Human, Mouse, Rat
HOMOLOGY:	Predicted species reactivity based on immunogen sequence: Bovine: (93%)
IMMUNOGEN:	Caspase-12 antibody was raised against a synthetic peptide corresponding to 15 amino acids within the small cleavage product of murine caspase-12. The immunogen is located within the last 50 amino acids of Caspase-12 .
TESTED APPLICATIONS:	ELISA, IHC-P, WB

APPLICATIONS:	Caspase-12 (small) antibody can be used for the detection of both the propeptide and cleaved forms of caspase-12 by Western blot at 1 µg/mL. Antibody can also be used for immunohistochemistry starting at 10 µg/mL. Antibody validated: Western Blot in mouse and rat samples and Immunohistochemistry in human samples. All other applications and species not yet tested.
POSITIVE CONTROL:	1) Cat. No. 1404 - Mouse Liver Tissue Lysate 2) Cat. No. 1464 - Rat Liver Tissue Lysate 3) Cat. No. 10-201 - Human Liver Tissue Slide
PREDICTED MOLECULAR WEIGHT:	Predicted: 46 kDa (uncleaved) Observed: 38 kDa

Ψ Properties

PURIFICATION:	Caspase-12 Antibody (Small) is affinity chromatography purified via peptide column.
CLONALITY:	Polyclonal
ISOTYPE:	IgG
CONJUGATE:	Unconjugated
PHYSICAL STATE:	Liquid
BUFFER:	Caspase-12 Antibody is supplied in PBS containing 0.02% sodium azide. (Small)
CONCENTRATION:	1 mg/mL
STORAGE CONDITIONS:	Caspase-12 antibody (Small) can be stored at -20 °C, stable for one year. As with all antibodies care should be taken to avoid repeated freeze thaw cycles. Antibodies should not be exposed to prolonged high temperatures.

Ψ Additional Info

OFFICIAL SYMBOL:	Casp12
ALTERNATE NAMES:	Caspase-12 Antibody (Small); Caspase-12, CASP-12
ACCESSION NO.:	CAA73532
PROTEIN GI NO.:	2094806
GENE ID:	12364
USER NOTE:	Optimal dilutions for each application to be determined by the researcher.

Ψ Background and References

BACKGROUND:	Caspase-12 Antibody: (Small)Three distinct signaling pathways lead to programmed cell death (apoptosis). The death receptor and mitochondrion pathways are the main, in which the key apoptotic proteases caspase-8 and caspase-9, respectively, are involved. The endoplasmic reticulum (ER) stress is the third apoptotic pathway and caspase-12 is involved. Caspase-12 is localized to the ER but not to cytoplasm or mitochondrion. Caspase-12 is activated by ER stress, including disruption of ER calcium homeostasis, and mediates ER stress-induced apoptosis. Caspase-12 is co-localized to the ER with several proteins that are involved in Alzheimer's disease including gamma-secretase presenilin and beta-amyloid precursor protein (APP). Caspase-12 mediates cytotoxicity induced by amyloid-beta. Caspase-12 is ubiquitously expressed in mouse tissues.
REFERENCES:	1) Nakagawa T, Zhu Human, Mouseorishima N, et al. Caspase-12 mediates endoplasmic-reticulum-specific apoptosis and cytotoxicity by amyloid-β. Nature 2000; 403:98-103.
	2) Mehmet H. Caspases find a new place to hide. Nature 2000; 403:29-30
	3) Van de Craen M, Vandenabeele P, Declercq W, et al. Characterization of seven murine caspase family members. FEBS Lett 1997; 403:61-9.

ANTIBODIES FOR RESEARCH USE ONLY.

For additional information, visit ProSci's [Terms & Conditions Page](#).