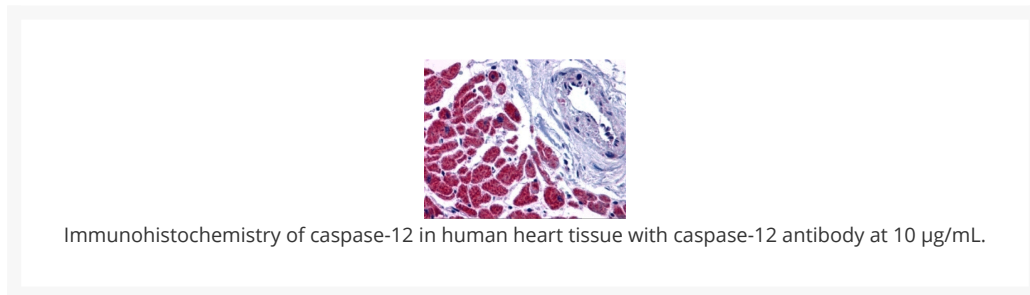
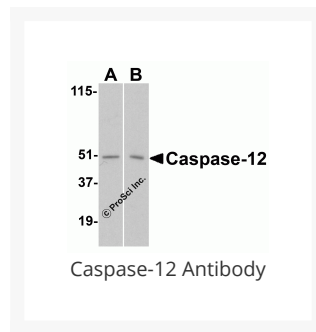




# Caspase-12 Antibody

Cat. No.: 2325



## Ψ Specifications

<b>HOST SPECIES:</b>	Rabbit
<b>SPECIES REACTIVITY:</b>	Human, Mouse, Rat
<b>IMMUNOGEN:</b>	Caspase-12 antibody was raised against a 16 amino acid peptide near the amino terminus of murine Caspase-12.  The immunogen is located within the first 50 amino acids of Caspase-12.
<b>TESTED APPLICATIONS:</b>	ELISA, IHC-P, WB
<b>APPLICATIONS:</b>	Caspase-12 antibody can be used for detection of caspase-12 by Western blot at 1 µg/mL. Antibody can also be used for immunohistochemistry starting at 10 µg/mL.  Antibody validated: Western Blot in human and mouse samples and Immunohistochemistry in human samples. All other applications and species not yet tested.

<b>POSITIVE CONTROL:</b>	1) Cat. No. 1406 - Mouse Spleen Tissue Lysate
	2) Cat. No. 1301 - Human Heart Tissue Lysate
	3) Cat. No. 1306 - Human Spleen Tissue Lysate
	4) Cat. No. 10-501 - Human Heart Tissue Slide
<b>PREDICTED MOLECULAR WEIGHT:</b>	Predicted: 46 kDa Observed: 51 kDa

## Properties

<b>PURIFICATION:</b>	Caspase-12 Antibody is affinity chromatography purified via peptide column.
<b>CLONALITY:</b>	Polyclonal
<b>ISOTYPE:</b>	IgG
<b>CONJUGATE:</b>	Unconjugated
<b>PHYSICAL STATE:</b>	Liquid
<b>BUFFER:</b>	Caspase-12 Antibody is supplied in PBS containing 0.02% sodium azide.
<b>CONCENTRATION:</b>	1 mg/mL
<b>STORAGE CONDITIONS:</b>	Caspase-12 antibody can be stored at 4°C for three months and -20°C, stable for up to one year. As with all antibodies care should be taken to avoid repeated freeze thaw cycles. Antibodies should not be exposed to prolonged high temperatures.

## Additional Info

<b>OFFICIAL SYMBOL:</b>	Casp12
<b>ALTERNATE NAMES:</b>	Caspase-12 Antibody: Caspase-12, CASP-12
<b>ACCESSION NO.:</b>	CAA73532
<b>PROTEIN GI NO.:</b>	2094806
<b>GENE ID:</b>	12364
<b>USER NOTE:</b>	Optimal dilutions for each application to be determined by the researcher.

## Background and References

<b>BACKGROUND:</b>	Caspase-12 Antibody: Three distinct signaling pathways lead to programmed cell death (apoptosis). The death receptor and mitochondrion pathways are the mains, in which the key apoptotic proteases capase-8 and caspase-9, respectively, are involved. The endoplasmic reticulum (ER) stress is the third apoptotic pathway and caspase-12 is involved. Caspase-12 is localized to the ER but not to cytoplasm or mitochondrion. Caspase-12 is activated by ER stress, including disruption of ER calcium homeostasis, and mediates ER stress-induced apoptosis. Caspase-12 is co-localized to the ER with several proteins that are involved in Alzheimer's disease including gamma-secretase presenilin and beta-amyloid precursor protein (APP). Caspase-12 mediates cytotoxicity induced by amyloid-beta. Caspase-12 is ubiquitously expressed in mouse tissues.
<b>REFERENCES:</b>	1) Nakagawa T, Zhu H, Morishima N, et al. Caspase-12 mediates endoplasmic-reticulum-specific apoptosis and cytotoxicity by amyloid- $\beta$ . Nature 2000; 403:98-103.
	2) Mehmet H. Caspases find a new place to hide. Nature 2000; 403:29-30
	3) Van de Craen M, Vandenabeele P, Declercq W, et al. Characterization of seven murine caspase family members. FEBS Lett 1997; 403:61-9

### ANTIBODIES FOR RESEARCH USE ONLY.

For additional information, visit ProSci's [Terms & Conditions Page](#).