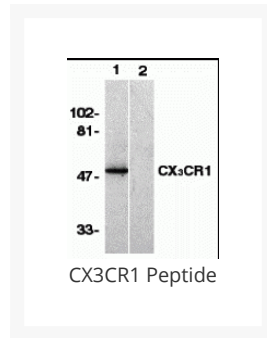




CX3CR1 Peptide

Cat. No.: 2093P



Ψ Specifications

SPECIES:	Human
TESTED APPLICATIONS:	Blocking
APPLICATIONS:	CX3CR1 peptide is used for blocking the activity of CX3CR1 antibody.

Ψ Properties

PHYSICAL STATE:	Liquid
BUFFER:	PBS pH 7.2 (10 mM NaH ₂ PO ₄ , 10 mM Na ₂ HPO ₄ , 130 mM NaCl) containing 0.1% bovine serum albumin and 0.02% sodium azide
CONCENTRATION:	200 ug/mL
STORAGE CONDITIONS:	Store CX3CR1 peptide at -20 °C, stable for one year.

Ψ Additional Info

OFFICIAL SYMBOL:	CX3CR1
ALTERNATE NAMES:	V28, CCRL1, GPR13, CMKDR1, GPRV28, CMKBRL1, CX3C chemokine receptor 1, Beta chemokine receptor-like 1, C-X3-C CKR-1

ACCESSION NO.:	NP_001328
PROTEIN GI NO.:	4503171
GENE ID:	1524

Background and References

REFERENCES:	1) Raport CJ, Schweickart VL, Eddy RL JR, Shows TB, Gray PW. The orphan G-protein-coupled receptor-encoding gene V28 is closely related to genes for chemokine receptors and is expressed in lymphoid and neural tissues. <i>Gene</i> 1995;163:295-9.
	2) Thome M, Hofmann K, Burns K, Martinon F, Bodmer JL, Mattmann C, Tschopp J. Identification of CARDIAK, a RIP-like kinase that associates with caspase-1. <i>Curr Biol</i> 1998;8:885-8 (RD1299)

ANTIBODIES FOR RESEARCH USE ONLY.

For additional information, visit ProSci's [Terms & Conditions Page](#).