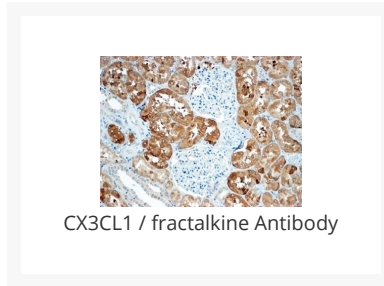




# CX3CL1 / fractalkine Antibody

Cat. No.: 43-578



## Ψ Specifications

<b>HOST SPECIES:</b>	Goat
<b>SPECIES REACTIVITY:</b>	Human
<b>IMMUNOGEN:</b>	The immunogen for this antibody is: C-KTSEAPSTQDPST
<b>TESTED APPLICATIONS:</b>	ELISA, WB
<b>APPLICATIONS:</b>	<b>Peptide ELISA:</b> antibody detection limit dilution 1:128000. <b>Western Blot:</b> Approx 45kDa band observed in Human Colorectal cancer lysates (calculated MW of 42.2kDa according to NP_002987.1). Recommended concentration: 0.3-1ug/ml.
<b>PREDICTED MOLECULAR WEIGHT:</b>	Approx 45kDa

## Ψ Properties

<b>PURIFICATION:</b>	Purified from goat serum by ammonium sulphate precipitation followed by antigen affinity chromatography using the immunizing peptide.
<b>CLONALITY:</b>	Polyclonal
<b>CONJUGATE:</b>	Unconjugated
<b>PHYSICAL STATE:</b>	Liquid
<b>BUFFER:</b>	Supplied at 0.5 mg/ml in Tris saline, 0.02% sodium azide, pH7.3 with 0.5% bovine serum albumin. Aliquot and store at -20°C. Minimize freezing and thawing.

<b>CONCENTRATION:</b>	500 ug/mL
<b>STORAGE CONDITIONS:</b>	Aliquot and store at -20 °C. Minimize freezing and thawing.

## Ψ Additional Info

<b>OFFICIAL SYMBOL:</b>	CX3CL1 / fractalkine
<b>ALTERNATE NAMES:</b>	CX3CL1, chemokine (C-X3-C motif) ligand 1, ABCD-3, C3Xkine, CXC3, CXC3C, NTN, NTT, SCYD1, fractalkine, neurotactin, C-X3-C motif chemokine 1, CX3C membrane-anchored chemokine, fractalkine, small inducible cytokine subfamily D (Cys-X3-Cys), member 1 (fract
<b>ACCESSION NO.:</b>	NP_002987.1
<b>PROTEIN GI NO.:</b>	1899259
<b>GENE ID:</b>	6376

## Ψ Background and References

<b>REFERENCES:</b>	1) Hermand P, Pincet F, Carvalho S, Ansanay H, Trinquet E, Daoudi M, Combadière C, Deterre P. Functional adhesiveness of the CX3CL1 chemokine requires its aggregation. Role of the transmembrane domain.
--------------------	---

### ANTIBODIES FOR RESEARCH USE ONLY.

For additional information, visit ProSci's [Terms & Conditions Page](#).