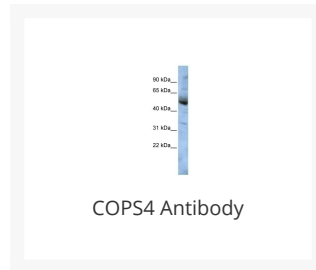




COPS4 Antibody

Cat. No.: 27-100



Ψ Specifications

| | |
|------------------------------------|---|
| HOST SPECIES: | Rabbit |
| SPECIES REACTIVITY: | Human, Mouse, Rat |
| IMMUNOGEN: | Antibody produced in rabbits immunized with a synthetic peptide corresponding a region of human COPS4. |
| TESTED APPLICATIONS: | ELISA, WB |
| APPLICATIONS: | COPS4 antibody can be used for detection of COPS4 by ELISA at 1:312500. COPS4 antibody can be used for detection of COPS4 by western blot at 1 µg/mL, and HRP conjugated secondary antibody should be diluted 1:50,000 - 100,000. |
| POSITIVE CONTROL: | 1) Cat. No. 1211 - HepG2 Cell Lysate |
| PREDICTED MOLECULAR WEIGHT: | 46 kDa |

Ψ Properties

| | |
|------------------------|---|
| PURIFICATION: | Antibody is purified by peptide affinity chromatography method. |
| CLONALITY: | Polyclonal |
| CONJUGATE: | Unconjugated |
| PHYSICAL STATE: | Liquid |

| | |
|----------------------------|---|
| BUFFER: | Purified antibody supplied in 1x PBS buffer with 0.09% (w/v) sodium azide and 2% sucrose. |
| CONCENTRATION: | batch dependent |
| STORAGE CONDITIONS: | For short periods of storage (days) store at 4 °C. For longer periods of storage, store COPS4 antibody at -20 °C. As with any antibody avoid repeat freeze-thaw cycles. |

Additional Info

| | |
|-------------------------|--|
| OFFICIAL SYMBOL: | COPS4 |
| ALTERNATE NAMES: | COPS4, MGC10899, MGC15160, CSN4 |
| ACCESSION NO.: | NP_057213 |
| PROTEIN GI NO.: | 38373690 |
| GENE ID: | 51138 |
| USER NOTE: | Optimal dilutions for each application to be determined by the researcher. |

Background and References

| | |
|--------------------|---|
| BACKGROUND: | <p>COPS4 is one of eight subunits composing COP9 signalosome, a highly conserved protein complex that functions as an important regulator in multiple signaling pathways. The structure and function of COP9 signalosome is similar to that of the 19S regulatory particle of 26S proteasome. COP9 signalosome has been shown to interact with SCF-type E3 ubiquitin ligases and act as a positive regulator of E3 ubiquitin ligases. This gene encodes one of eight subunits composing COP9 signalosome, a highly conserved protein complex that functions as an important regulator in multiple signaling pathways. The structure and function of COP9 signalosome is similar to that of the 19S regulatory particle of 26S proteasome. COP9 signalosome has been shown to interact with SCF-type E3 ubiquitin ligases and act as a positive regulator of E3 ubiquitin ligases. Publication Note: This RefSeq record includes a subset of the publications that are available for this gene. Please see the Entrez Gene record to access additional publications.</p> |
| REFERENCES: | 1) Ewing, R.M., Mol. Syst. Biol. 3, 89 (2007). |

ANTIBODIES FOR RESEARCH USE ONLY.

For additional information, visit ProSci's [Terms & Conditions Page](#).