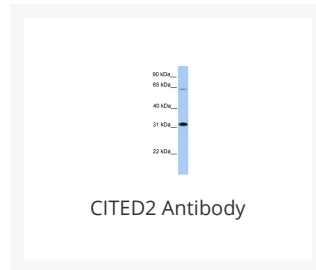




CITED2 Antibody

Cat. No.: 25-448



Ψ Specifications

HOST SPECIES:	Rabbit
SPECIES REACTIVITY:	Human, Mouse, Rat
IMMUNOGEN:	Antibody produced in rabbits immunized with a synthetic peptide corresponding a region of human CITED2.
TESTED APPLICATIONS:	ELISA, WB
APPLICATIONS:	CITED2 antibody can be used for detection of CITED2 by ELISA at 1:1562500. CITED2 antibody can be used for detection of CITED2 by western blot at 1 µg/mL, and HRP conjugated secondary antibody should be diluted 1:50,000 - 100,000.
POSITIVE CONTROL:	1) Cat. No. 1205 - Jurkat Cell Lysate
PREDICTED MOLECULAR WEIGHT:	28 kDa

Ψ Properties

PURIFICATION:	Antibody is purified by peptide affinity chromatography method.
CLONALITY:	Polyclonal
CONJUGATE:	Unconjugated
PHYSICAL STATE:	Liquid

BUFFER:	Purified antibody supplied in 1x PBS buffer with 0.09% (w/v) sodium azide and 2% sucrose.
CONCENTRATION:	batch dependent
STORAGE CONDITIONS:	For short periods of storage (days) store at 4 °C. For longer periods of storage, store CITED2 antibody at -20 °C. As with any antibody avoid repeat freeze-thaw cycles.

Additional Info

OFFICIAL SYMBOL:	CITED2
ALTERNATE NAMES:	CITED2, MRG1, P35SRJ, ASD8, VSD2, MRG-1
ACCESSION NO.:	NP_006070
PROTEIN GI NO.:	19923343
GENE ID:	10370
USER NOTE:	Optimal dilutions for each application to be determined by the researcher.

Background and References

BACKGROUND:	CITED2 belongs to the CITED family. It interferes with the binding of transcription factors HIF-1a and STAT2 to p300/CBP.
REFERENCES:	1) Bai, L. (2007) FEBS Lett. 581 (30), 5904-5910.

ANTIBODIES FOR RESEARCH USE ONLY.

For additional information, visit ProSci's [Terms & Conditions Page](#).