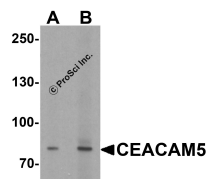


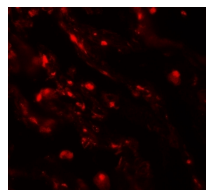


# CEACAM5 Antibody

Cat. No.: 7453



Western blot analysis of CEACAM5 in rat lung tissue lysate with CEACAM5 antibody at (A) 1 and (B) 2 µg/ml.



Immunofluorescence of CEACAM5 in human lung tissue with CEACAM5 antibody at 20 µg/mL.

## Ψ Specifications

<b>HOST SPECIES:</b>	Rabbit
<b>SPECIES REACTIVITY:</b>	Human, Rat
<b>IMMUNOGEN:</b>	CEACAM5 antibody was raised against a 15 amino acid peptide near the center of human CEACAM5.  The immunogen is located within amino acids 310 - 360 of CEACAM5 .
<b>TESTED APPLICATIONS:</b>	ELISA, WB
<b>APPLICATIONS:</b>	CEACAM5 antibody can be used for detection of CEACAM5 by Western blot at 1 - 2 µg/ml.  Antibody validated: Western Blot in rat samples and Immunofluorescence in human samples. All other applications and species not yet tested.

<b>SPECIFICITY:</b>	CEACAM5 antibody is human, mouse and rat reactive. CEACAM5 antibody is predicted to not cross-react with other CEACAM protein family members.
<b>POSITIVE CONTROL:</b>	1) Cat. No. 1462 - Rat Lung Tissue Lysate
	2) Cat. No. 10-101 - Human Lung Tissue Slide
<b>PREDICTED MOLECULAR WEIGHT:</b>	Predicted: 77 kDa Observed: 80kDa

## Ψ Properties

<b>PURIFICATION:</b>	CEACAM5 Antibody is affinity chromatography purified via peptide column.
<b>CLONALITY:</b>	Polyclonal
<b>ISOTYPE:</b>	IgG
<b>CONJUGATE:</b>	Unconjugated
<b>PHYSICAL STATE:</b>	Liquid
<b>BUFFER:</b>	CEACAM5 Antibody is supplied in PBS containing 0.02% sodium azide.
<b>CONCENTRATION:</b>	1 mg/mL
<b>STORAGE CONDITIONS:</b>	CEACAM5 antibody can be stored at 4 °C for three months and -20 °C, stable for up to one year.

## Ψ Additional Info

<b>OFFICIAL SYMBOL:</b>	CEACAM5
<b>ALTERNATE NAMES:</b>	CEACAM5 Antibody : CEA, CD66e, CEA, Carcinoembryonic antigen-related cell adhesion molecule 5, Carcinoembryonic antigen
<b>ACCESSION NO.:</b>	NP_004354
<b>PROTEIN GI NO.:</b>	98986445
<b>GENE ID:</b>	1048
<b>USER NOTE:</b>	Optimal dilutions for each application to be determined by the researcher.

## Ψ Background and References

<b>BACKGROUND:</b>	CEACAM5 is a member of the carcinoembryonic antigen (CEA) family, which belongs to the immunoglobulin superfamily (1,2). CEACAM proteins are involved in cell-cell recognition and modulate cellular processes that range from the shaping of tissue architecture and neovascularization to the regulation of insulin homeostasis and T-cell proliferation (2). CEACAM5 has been shown to be overexpressed in a majority of carcinomas and has been suggested to be a intercellular adhesion molecule involved in cancer invasion and metastasis (3).
<b>REFERENCES:</b>	1) Gold P and Freedman SO. Specific carinoembryonic antigens of the human digestive system. J. Exp. Med. 1965; 122:467-81.
	2) Kuespert K, Pils S, and Hauck CR. CEACAMs: their role in physiology and pathophysiology. Curr. Opin. Cell Biol. 2006; 565-71.
	3) Yoshioka T, Masuko T, Kotanagi H, et al. Homotypic adhesion though carcinoembryonic antigen plays a role in hepatic metastasis development. Jpn. J. Cancer Res. 1998; 89:177-85.

**ANTIBODIES FOR RESEARCH USE ONLY.**

For additional information, visit ProSci's [Terms & Conditions Page](#).