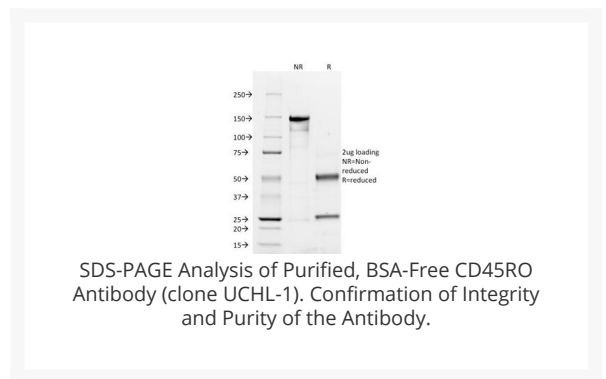
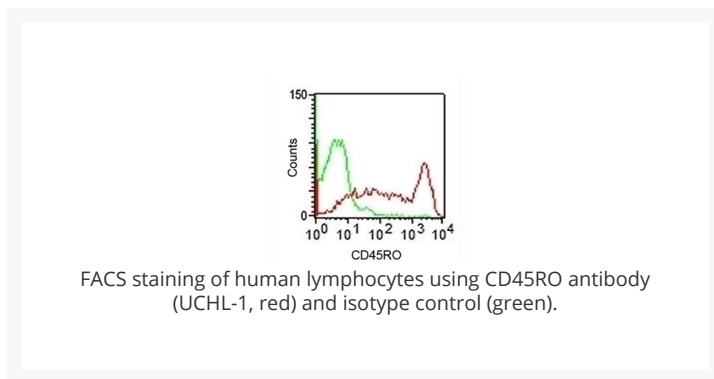




CD45RO Antibody [UCLH-1]

Cat. No.: 33-194



Ψ Specifications

HOST SPECIES:	Mouse
SPECIES REACTIVITY:	Chimpanzee, Human
IMMUNOGEN:	Cultured human T-cells from an IL-2-dependent T-cell line (CA1) were used as the immunogen for the CD45RO antibody.
TESTED APPLICATIONS:	Flow, IF, IHC, WB

APPLICATIONS:	Flow Cytometry: 0.5-1 ug/million cells
	IF: 1-2 ug/ml
	IHC (FFPE): 0.5-1 ug/ml for 30 minutes at RT (1)
	Prediluted format : incubate for 30 min at RT (2)
	The concentration stated for each application is a general starting point. Variations in protocols, secondaries and substrates may require the CD45RO antibody to be titered up or down for optimal performance.
	1. Staining of formalin-fixed tissues requires boiling tissue sections in 10mM Citrate Buffer, pH 6.0, for 10-20 min followed by cooling at RT for 20 minutes.
	2. The prediluted format is supplied in a dropper bottle and is optimized for use in IHC. After epitope retrieval step (if required), drip mAb solution onto the tissue section and incubate at RT for 30 min.

Ψ Properties

PURIFICATION:	Protein G affinity chromatography
CLONALITY:	Monoclonal
ISOTYPE:	IgG2a, kappa
CONJUGATE:	Unconjugated
PHYSICAL STATE:	Liquid
BUFFER:	PBS with 0.1 mg/ml BSA and 0.05% sodium azide
CONCENTRATION:	0.2 mg/mL
STORAGE CONDITIONS:	Aliquot and Store at 2-8 °C. Avoid freeze-thaw cycles.

Ψ Additional Info

OFFICIAL SYMBOL:	PTPRC
ALTERNATE NAMES:	Receptor-type tyrosine-protein phosphatase C, Leukocyte common antigen, L-CA, T200, CD45, PTPRC, CD45
GENE ID:	5788
USER NOTE:	Optimal dilutions for each application to be determined by the researcher

Ψ Background and References

BACKGROUND:	This antibody recognizes a 180-185kDa protein, identified as isoform of leukocyte common antigen (CD45) called CD45RO (4th Leucocyte Typing Workshop: Code No. N31). The epitope recognized by this antibody is sensitive to neuraminidase digestion. CD45RO is found on mature activated T-cells, most thymocytes, and a sub-population of resting T-cells within both CD4 and CD8 subsets. The CD45RO antibody shows no reactivity with normal B or natural killer cells, but reacts with granulocytes and monocytes. Reportedly, antibody to CD45RO is useful to identify T-cell lymphomas and leukemias. It rarely stains NK cells or B-cell lymphomas.
--------------------	---

ANTIBODIES FOR RESEARCH USE ONLY.

For additional information, visit ProSci's [Terms & Conditions Page](#).