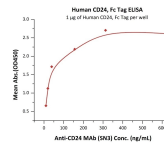
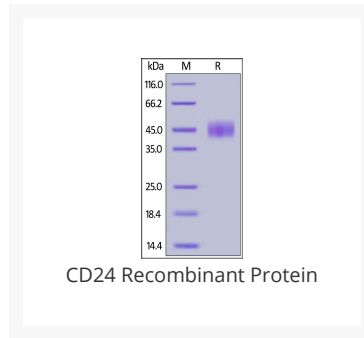




# CD24 Recombinant Protein

Cat. No.: 11-277



Immobilized Human CD24, Fc Tag at 10 ug/mL (100 uL/well) can bind Anti-CD24 MAb (SN3) with a linear range of 2-78 ng/mL (QC tested).

## Ψ Specifications

<b>SPECIES:</b>	Human
<b>SOURCE SPECIES:</b>	HEK293 cells
<b>SEQUENCE:</b>	Ser 27 - Gly 59
<b>FUSION TAG:</b>	Fc Tag
<b>TESTED APPLICATIONS:</b>	ELISA, WB
<b>APPLICATIONS:</b>	This protein carries a human IgG1 Fc tag at the C-terminus. The protein has a calculated MW of 29.6 kDa. The protein migrates as 40-50 kDa under reducing (R) condition (SDS-PAGE) due to glycosylation.
<b>PREDICTED MOLECULAR WEIGHT:</b>	29.6 kDa

<b>PURITY:</b>	>95% as determined by SDS-PAGE.
<b>PHYSICAL STATE:</b>	Lyophilized
<b>BUFFER:</b>	PBS, pH7.4
<b>STORAGE CONDITIONS:</b>	Lyophilized Protein should be stored at -20 °C or lower for long term storage. Upon reconstitution, working aliquots should be stored at -20 °C or -70 °C. Avoid repeated freeze-thaw cycles.

## Ψ Additional Info

<b>OFFICIAL SYMBOL:</b>	CD24
<b>ALTERNATE NAMES:</b>	CD24,CD24A
<b>ACCESSION NO.:</b>	NP_001278666.1
<b>GENE ID:</b>	100133941

## Ψ Background and References

<b>BACKGROUND:</b>	CD24 may have a pivotal role in cell differentiation of different cell types. Signaling could be triggered by the binding of a lectin-like ligand to the CD24 carbohydrates, and transduced by the release of second messengers derived from the GPI-anchor. Modulates B-cell activation responses. Promotes AG-dependent proliferation of B-cells, and prevents their terminal differentiation into antibody-forming cells. In association with SIGLEC10 may be involved in the selective suppression of the immune response to danger-associated molecular patterns (DAMPs) such as HMGB1, HSP70 and HSP90. Plays a role in the control of autoimmunity.
<b>REFERENCES:</b>	1) Suzuki T1, et al. 2001. J Immunol. 166(9):5567-77.
	2) Chen Z, et al. 2017. Biomed Pharmacother. 90:427-436.
	3) Eyvazi S, et al. 2018. Curr Cancer Drug Targets. 18(4):328-336.

### ANTIBODIES FOR RESEARCH USE ONLY.

For additional information, visit ProSci's [Terms & Conditions Page](#).