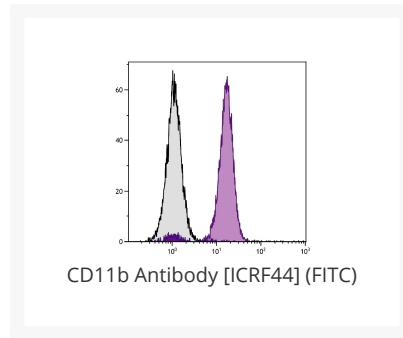




CD11b Antibody [ICRF44] (FITC)

Cat. No.: 99-462



Ψ Specifications

HOST SPECIES:	Mouse
SPECIES REACTIVITY:	Baboon, Chimpanzee, Human, Porcine
IMMUNOGEN:	Rheumatoid synovial cells and human monocytes
TESTED APPLICATIONS:	Activity, Costimulation, Flow, IP
APPLICATIONS:	CD11b Antibody [ICRF44] for use in flow cytometry, immunohistochemistry / immunocytochemistry and western blotting assays.
SPECIFICITY:	CD11b

Ψ Properties

CLONALITY:	Monoclonal
ISOTYPE:	IgG1
CONJUGATE:	FITC
PHYSICAL STATE:	Liquid
BUFFER:	Supplied in PBS/NaN3
CONCENTRATION:	Lot specific

STORAGE CONDITIONS:	Store vial at 2-8 °C
----------------------------	----------------------

Additional Info

OFFICIAL SYMBOL:	ITGAM
ALTERNATE NAMES:	Mac-1alpha, Mo-1, CR3, integrin alphaM, C3biR, ITGAM, CR3A, p170
ACCESSION NO.:	P11215
GENE ID:	3684
USER NOTE:	Optimal dilutions for each application to be determined by the researcher.

Background and References

BACKGROUND:	CD11b is the 165 kDa alphaM chain which combines with the CD18 beta2 integrin subunit to form the Mac-1 heterodimer. It is expressed on activated lymphocytes, monocytes, granulocytes and a subset of NK cells. CD11b functions in cell-cell and cell-substrate interactions and is a ligand for C3bi, CD50 (ICAM-3), CD54 (ICAM-1) and CD102 (ICAM-2).
--------------------	--

ANTIBODIES FOR RESEARCH USE ONLY.

For additional information, visit ProSci's [Terms & Conditions Page](#).