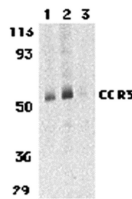


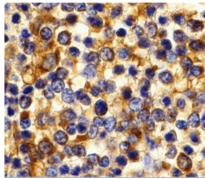


CCR3 Antibody

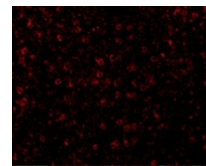
Cat. No.: 1105



Western blot analysis of CCR3 in human spleen tissue lysates with CCR3 antibody at 1 (lane 1) and 2 μ g/mL (lane 2), and 2 μ g/mL in the presence of blocking peptide (lane 3).



Immunohistochemistry of CCR3 in human spleen tissue with CCR3 antibody at 10 μ g/mL.



Immunofluorescence of CCR3 in Human Spleen tissue with CCR3 antibody at 20 μ g/mL.

Ψ Specifications

HOST SPECIES:	Rabbit
SPECIES REACTIVITY:	Human, Mouse, Rat
IMMUNOGEN:	CCR3 antibody was raised against a 14 amino acid synthetic peptide from near the carboxy terminus of human CCR3. The immunogen is located within the last 50 amino acids of CCR3.
TESTED APPLICATIONS:	ELISA, IF, IHC-P, WB

APPLICATIONS:	CCR3 antibody can be used for the detection of CCR3 by Western blot at 1 - 2 µg/mL. Antibody can also be used for immunohistochemistry starting at 10 µg/mL. For immunofluorescence start at 20 µg/mL. Antibody validated: Western Blot in human samples; Immunohistochemistry in human samples and Immunofluorescence in human samples. All other applications and species not yet tested.
SPECIFICITY:	At least three isoforms of CCR3 are known to exist; this antibody will detect all three isoforms.
POSITIVE CONTROL:	1) Cat. No. 1306 - Human Spleen Tissue Lysate 2) Cat. No. 10-901 - Human Spleen Tissue Slide
PREDICTED MOLECULAR WEIGHT:	Predicted: 39, 41 kDa Observed: 52 kDa

Ψ Properties

PURIFICATION:	CCR3 Antibody is affinity chromatography purified via peptide column.
CLONALITY:	Polyclonal
ISOTYPE:	IgG
CONJUGATE:	Unconjugated
PHYSICAL STATE:	Liquid
BUFFER:	CCR3 Antibody is supplied in PBS containing 0.02% sodium azide.
CONCENTRATION:	1 mg/mL
STORAGE CONDITIONS:	CCR3 antibody can be stored at 4 °C for three months and -20 °C, stable for up to one year. As with all antibodies care should be taken to avoid repeated freeze thaw cycles. Antibodies should not be exposed to prolonged high temperatures.

Ψ Additional Info

OFFICIAL SYMBOL:	CCR3
ALTERNATE NAMES:	CCR3 Antibody: CKR3, CD193, CMKBR3, CC-CKR-3, C-C chemokine receptor type 3, Eosinophil eotaxin receptor, C-C CKR-3
ACCESSION NO.:	NP_847899
PROTEIN GI NO.:	30581170
GENE ID:	1232
USER NOTE:	Optimal dilutions for each application to be determined by the researcher.

Ψ Background and References

BACKGROUND:	CCR3 Antibody: Human immunodeficiency virus (HIV) and related virus require coreceptors to infect target cells. Some G protein-coupled receptors including CCR5, CXCR4, CCR3, CCR2b, CCR8, GPR15, STRL33, and CX3CR1 in the chemokine receptor family were recently identified as HIV coreceptors. CCR5, CXCR4 and CCR3 are the principal receptors for HIV fusion and entry of target cells. CCR3 facilitates infection by a subset of virus. CCR3 and CCR5 promote efficient infection of microglia, the major target cells in the CNS. High levels of CCR3 and CXCR4 expression were found on the neurons from both the central and peripheral nervous systems. The CCR3 ligand, eotaxin, and an anti-CCR3 antibody inhibited HIV infection of microglia. These results indicate CCR3 plays an important role in HIV infection of CNS.
REFERENCES:	1) Feng Y, Broder CC, Kennedy PE, et al. HIV-1 entry cofactor: functional cDNA cloning of a seven-transmembrane, G protein-coupled receptor. <i>Science</i> 1996; 272:872-7.
	2) Deng H, Liu R, Ellmeier W, et al. Identification of a major co-receptor for primary isolates of HIV-1. <i>Nature</i> 1996; 381:661-6.
	3) Choe H, Farzan M, Sun Y, et al. The β -chemokine receptors CCR3 and CCR5 facilitate infection by primary HIV-1 isolates. <i>Cell</i> 1996; 85:1135-48.
	4) He J, Chen Y, Farzan M, et al. CCR3 and CCR5 are co-receptors for HIV-1 infection of microglia. <i>Nature</i> 1997; 385:645-9.

ANTIBODIES FOR RESEARCH USE ONLY.

For additional information, visit ProSci's [Terms & Conditions Page](#).