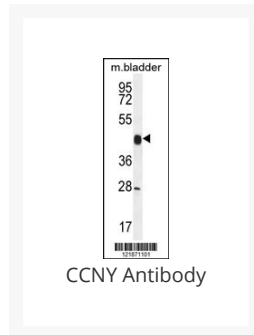




# CCNY Antibody

Cat. No.: 55-051



## Ψ Specifications

<b>HOST SPECIES:</b>	Rabbit
<b>SPECIES REACTIVITY:</b>	Human, Mouse
<b>IMMUNOGEN:</b>	This CCNY antibody is generated from rabbits immunized with a KLH conjugated synthetic peptide between 140-169 amino acids from the Central region of human CCNY.
<b>TESTED APPLICATIONS:</b>	WB
<b>APPLICATIONS:</b>	For WB starting dilution is: 1:1000
<b>PREDICTED MOLECULAR WEIGHT:</b>	39 kDa

## Ψ Properties

<b>PURIFICATION:</b>	This antibody is purified through a protein A column, followed by peptide affinity purification.
<b>CLONALITY:</b>	Polyclonal
<b>ISOTYPE:</b>	Rabbit Ig
<b>CONJUGATE:</b>	Unconjugated
<b>PHYSICAL STATE:</b>	Liquid

<b>BUFFER:</b>	Supplied in PBS with 0.09% (W/V) sodium azide.
<b>CONCENTRATION:</b>	batch dependent
<b>STORAGE CONDITIONS:</b>	Store at 4 °C for three months and -20 °C, stable for up to one year. As with all antibodies care should be taken to avoid repeated freeze thaw cycles. Antibodies should not be exposed to prolonged high temperatures.

## Additional Info

<b>OFFICIAL SYMBOL:</b>	CCNY
<b>ALTERNATE NAMES:</b>	Cyclin-Y, Cyc-Y, Cyclin box protein 1, Cyclin fold protein 1, cyclin-X, CCNY, C10orf9, CBCP1, CFP1
<b>ACCESSION NO.:</b>	Q8ND76
<b>PROTEIN GI NO.:</b>	71658801
<b>GENE ID:</b>	219771
<b>USER NOTE:</b>	Optimal dilutions for each application to be determined by the researcher.

## Background and References

<b>BACKGROUND:</b>	Cyclins, such as CCNY, control cell division cycles and regulate cyclin-dependent kinases (e.g., CDC2; MIM 116940) (Li et al., 2009 [PubMed 18060517]).
<b>REFERENCES:</b>	1) Wang, K., et al. Hum. Mol. Genet. 19(10):2059-2067(2010)
	2) Xu, Y., et al. Oncol. Res. 18(8):359-364(2010)
	3) Chapuis, J., et al. Mol. Psychiatry 14(11):1004-1016(2009)
	4) Henckaerts, L., et al. Clin. Gastroenterol. Hepatol. 7(9):972-980(2009)

### **ANTIBODIES FOR RESEARCH USE ONLY.**

For additional information, visit ProSci's [Terms & Conditions Page](#).