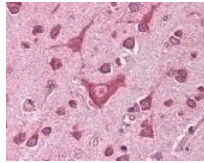




CAM Kinase 4 Antibody

Cat. No.: 49-390



Immunohistochemistry staining of CAM Kinase 4 in brain cortex tissue using CAM Kinase 4 Antibody.

Ψ Specifications

HOST SPECIES:	Rabbit
SPECIES REACTIVITY:	Bovine, Chimpanzee, Dog, Human, Mouse, Rat
IMMUNOGEN:	Amino acids 305-323 of Human CaM Kinase IV protein.
TESTED APPLICATIONS:	ELISA, IF, IHC, WB
APPLICATIONS:	CAM Kinase 4 antibody can be used in ELISA, Western Blot starting at 1:1000 - 1:2000, and immunohistochemistry starting at 5 - 10 μ g/mL.

Ψ Properties

PURIFICATION:	Delipidation and Defibrination
CLONALITY:	Polyclonal
CONJUGATE:	Unconjugated
PHYSICAL STATE:	Lyophilized
CONCENTRATION:	70 mg/ml
STORAGE CONDITIONS:	Store CAM Kinase 4 antibody at 4 °C or -20 °C. As with all antibodies avoid freeze/thaw cycles.

OFFICIAL SYMBOL:	CAMK4
ALTERNATE NAMES:	CAMK4, CAM kinase IV, CaMK IV, CaMK-GR, CAMKIV, CaMK, CAM kinase- GR, CaM kinase-GR, CaM-KIV
ACCESSION NO.:	Q16566
PROTEIN GI NO.:	2499586
GENE ID:	814
USER NOTE:	Optimal dilutions for each application to be determined by the researcher.

Background and References

BACKGROUND:	CAM Kinase 4 Antibody
--------------------	-----------------------

ANTIBODIES FOR RESEARCH USE ONLY.

For additional information, visit ProSci's [Terms & Conditions Page](#).