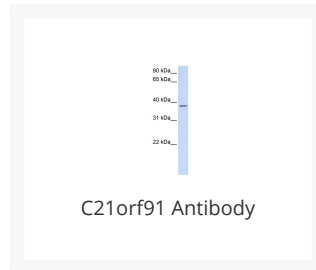




C21orf91 Antibody

Cat. No.: 26-082



Ψ Specifications

HOST SPECIES:	Rabbit
SPECIES REACTIVITY:	Human
IMMUNOGEN:	Antibody produced in rabbits immunized with a synthetic peptide corresponding a region of human C21orf91.
TESTED APPLICATIONS:	ELISA, WB
APPLICATIONS:	C21orf91 antibody can be used for detection of C21orf91 by ELISA at 1:12500. C21orf91 antibody can be used for detection of C21orf91 by western blot at 1 µg/mL, and HRP conjugated secondary antibody should be diluted 1:50,000 - 100,000.
POSITIVE CONTROL:	1) Cat. No. XBL-10410 - Fetal Lung Tissue Lysate
PREDICTED MOLECULAR WEIGHT:	34 kDa

Ψ Properties

PURIFICATION:	Antibody is purified by peptide affinity chromatography method.
CLONALITY:	Polyclonal
CONJUGATE:	Unconjugated
PHYSICAL STATE:	Liquid

BUFFER:	Purified antibody supplied in 1x PBS buffer with 0.09% (w/v) sodium azide and 2% sucrose.
CONCENTRATION:	batch dependent
STORAGE CONDITIONS:	For short periods of storage (days) store at 4 °C. For longer periods of storage, store C21orf91 antibody at -20 °C. As with any antibody avoid repeat freeze-thaw cycles.

Additional Info

OFFICIAL SYMBOL:	C21orf91
ALTERNATE NAMES:	C21orf91, C21orf14, C21orf38, DKFZp781D1223, YG81, EURL, CSSG1
ACCESSION NO.:	NP_059143
PROTEIN GI NO.:	154426302
GENE ID:	54149
USER NOTE:	Optimal dilutions for each application to be determined by the researcher.

Background and References

BACKGROUND:	The exact function of C21orf91 remains unknown.
REFERENCES:	1) Godbout, R., (2003) Dev. Dyn. 227 (3), 409-415.

ANTIBODIES FOR RESEARCH USE ONLY.

For additional information, visit ProSci's [Terms & Conditions Page](#).