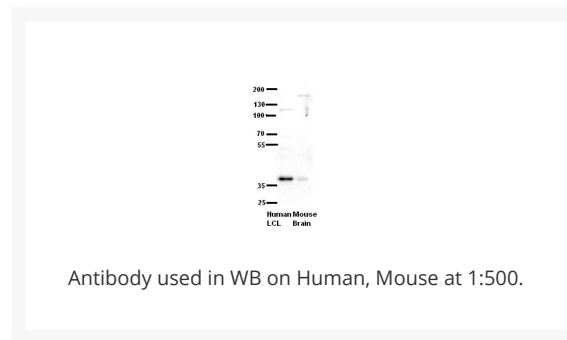
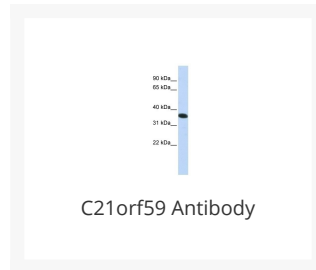




C21orf59 Antibody

Cat. No.: 26-085



Ψ Specifications

HOST SPECIES:	Rabbit
SPECIES REACTIVITY:	Human, Mouse, Rat
IMMUNOGEN:	Antibody produced in rabbits immunized with a synthetic peptide corresponding a region of human C21orf59.
TESTED APPLICATIONS:	ELISA, WB
APPLICATIONS:	C21orf59 antibody can be used for detection of C21orf59 by ELISA at 1:62500. C21orf59 antibody can be used for detection of C21orf59 by western blot at 1 µg/mL, and HRP conjugated secondary antibody should be diluted 1:50,000 - 100,000.
POSITIVE CONTROL:	1) Cat. No. 1205 - Jurkat Cell Lysate
PREDICTED MOLECULAR WEIGHT:	33 kDa

PURIFICATION:	Antibody is purified by peptide affinity chromatography method.
CLONALITY:	Polyclonal
CONJUGATE:	Unconjugated
PHYSICAL STATE:	Liquid
BUFFER:	Purified antibody supplied in 1x PBS buffer with 0.09% (w/v) sodium azide and 2% sucrose.
CONCENTRATION:	batch dependent
STORAGE CONDITIONS:	For short periods of storage (days) store at 4 °C. For longer periods of storage, store C21orf59 antibody at -20 °C. As with any antibody avoid repeat freeze-thaw cycles.

Ψ Additional Info

OFFICIAL SYMBOL:	C21orf59
ALTERNATE NAMES:	C21orf59, C21orf48, FLJ20467, FLJ37137, FLJ40247, FBB18, CILD26
ACCESSION NO.:	NP_067077
PROTEIN GI NO.:	11037061
GENE ID:	56683
USER NOTE:	Optimal dilutions for each application to be determined by the researcher.

Ψ Background and References

BACKGROUND:	The function of the C21orf59 protein remains unknown.
REFERENCES:	1) Deneud, F., (2007) Genome Res. 17 (6), 746-759.

ANTIBODIES FOR RESEARCH USE ONLY.

For additional information, visit ProSci's [Terms & Conditions Page](#).