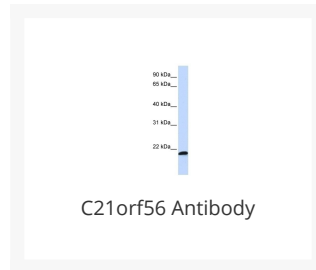




C21orf56 Antibody

Cat. No.: 26-087



Ψ Specifications

HOST SPECIES:	Rabbit
SPECIES REACTIVITY:	Human, Mouse, Rat
IMMUNOGEN:	Antibody produced in rabbits immunized with a synthetic peptide corresponding a region of human C21orf56.
TESTED APPLICATIONS:	ELISA, WB
APPLICATIONS:	C21orf56 antibody can be used for detection of C21orf56 by ELISA at 1:12500. C21orf56 antibody can be used for detection of C21orf56 by western blot at 1 µg/mL, and HRP conjugated secondary antibody should be diluted 1:50,000 - 100,000.
POSITIVE CONTROL:	1) Cat. No. 1219 - MCF7 Cell Lysate
PREDICTED MOLECULAR WEIGHT:	21 kDa

Ψ Properties

PURIFICATION:	Antibody is purified by peptide affinity chromatography method.
CLONALITY:	Polyclonal
CONJUGATE:	Unconjugated
PHYSICAL STATE:	Liquid

BUFFER:	Purified antibody supplied in 1x PBS buffer with 0.09% (w/v) sodium azide and 2% sucrose.
CONCENTRATION:	batch dependent
STORAGE CONDITIONS:	For short periods of storage (days) store at 4 °C. For longer periods of storage, store C21orf56 antibody at -20 °C. As with any antibody avoid repeat freeze-thaw cycles.

Additional Info

OFFICIAL SYMBOL:	SPATC1L
ALTERNATE NAMES:	C21orf56, DKFZp434N0650, MGC99490, C21orf56
ACCESSION NO.:	NP_115637
PROTEIN GI NO.:	23346427
GENE ID:	84221
USER NOTE:	Optimal dilutions for each application to be determined by the researcher.

Background and References

BACKGROUND:	The exact function of C21orf56 remains unknown.
REFERENCES:	1) Mehrle, A., Nucleic Acids Res. 34 (DATABASE ISSUE), D415-D418 (2006).

ANTIBODIES FOR RESEARCH USE ONLY.

For additional information, visit ProSci's [Terms & Conditions Page](#).