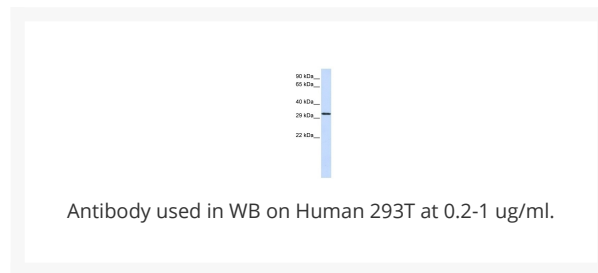
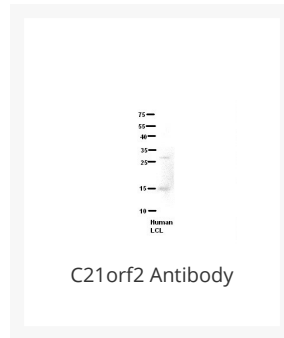




C21orf2 Antibody

Cat. No.: 26-078



Ψ Specifications

| | |
|------------------------------------|--|
| HOST SPECIES: | Rabbit |
| SPECIES REACTIVITY: | Human, Rat |
| IMMUNOGEN: | Antibody produced in rabbits immunized with a synthetic peptide corresponding a region of human C21orf2. |
| TESTED APPLICATIONS: | ELISA, WB |
| APPLICATIONS: | C21orf2 antibody can be used for detection of C21orf2 by ELISA at 1:1562500. C21orf2 antibody can be used for detection of C21orf2 by western blot at 1 µg/mL, and HRP conjugated secondary antibody should be diluted 1:50,000 - 100,000. |
| POSITIVE CONTROL: | 1) 293T Cell Lysate |
| PREDICTED MOLECULAR WEIGHT: | 28 kDa |

| | |
|----------------------------|---|
| PURIFICATION: | Antibody is purified by peptide affinity chromatography method. |
| CLONALITY: | Polyclonal |
| CONJUGATE: | Unconjugated |
| PHYSICAL STATE: | Liquid |
| BUFFER: | Purified antibody supplied in 1x PBS buffer with 0.09% (w/v) sodium azide and 2% sucrose. |
| CONCENTRATION: | batch dependent |
| STORAGE CONDITIONS: | For short periods of storage (days) store at 4 °C. For longer periods of storage, store C21orf2 antibody at -20 °C. As with any antibody avoid repeat freeze-thaw cycles. |

Ψ Additional Info

| | |
|-------------------------|--|
| OFFICIAL SYMBOL: | C21orf2 |
| ALTERNATE NAMES: | C21orf2, A2, YF5, YF5/A2 |
| ACCESSION NO.: | NP_004919 |
| PROTEIN GI NO.: | 4826651 |
| GENE ID: | 755 |
| USER NOTE: | Optimal dilutions for each application to be determined by the researcher. |

Ψ Background and References

| | |
|--------------------|--|
| BACKGROUND: | The function of the C21orf2 protein remains unknown. |
| REFERENCES: | 1) Oh, J.H., (2005) Mamm. Genome 16 (12), 942-954. |

ANTIBODIES FOR RESEARCH USE ONLY.

For additional information, visit ProSci's [Terms & Conditions Page](#).