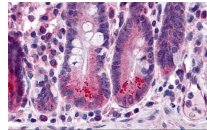




BRUCE Antibody

Cat. No.: 3309



BRUCE Antibody

Ψ Specifications

HOST SPECIES:	Rabbit
SPECIES REACTIVITY:	Human
HOMOLOGY:	Predicted species reactivity based on immunogen sequence: Mouse: (100%)
IMMUNOGEN:	BRUCE antibody was raised against a 17 amino acid synthetic peptide near the carboxy terminus of human BRUCE. The immunogen is located within amino acids 4760 - 4810 of BRUCE.
TESTED APPLICATIONS:	ELISA, IHC-P
APPLICATIONS:	BRUCE antibody can be used for detection of BRUCE by immunohistochemistry at 5 µg/mL. Antibody validated: Immunohistochemistry in human samples. All other applications and species not yet tested.
SPECIFICITY:	BRUCE antibody is human specific. Multiple isoforms of BRUCE are known to exist.
POSITIVE CONTROL:	1) Cat. No. 11-801 - Human Small Intestine Tissue Slide
PREDICTED MOLECULAR WEIGHT:	534 kDa

Ψ Properties

PURIFICATION:	BRUCE Antibody is affinity chromatography purified via peptide column.
CLONALITY:	Polyclonal
ISOTYPE:	IgG
CONJUGATE:	Unconjugated
PHYSICAL STATE:	Liquid
BUFFER:	BRUCE Antibody is supplied in PBS containing 0.02% sodium azide.
CONCENTRATION:	1 mg/mL
STORAGE CONDITIONS:	BRUCE antibody can be stored at 4 °C for three months and -20 °C, stable for up to one year. As with all antibodies care should be taken to avoid repeated freeze thaw cycles. Antibodies should not be exposed to prolonged high temperatures.

Additional Info

OFFICIAL SYMBOL:	BIRC6
ALTERNATE NAMES:	BRUCE Antibody: BRUCE, APOLLON, KIAA1289, Baculoviral IAP repeat-containing protein 6, BIR repeat-containing ubiquitin-conjugating enzyme, BRUCE
ACCESSION NO.:	NP_057336
PROTEIN GI NO.:	153792694
GENE ID:	57448
USER NOTE:	Optimal dilutions for each application to be determined by the researcher.

Background and References

BACKGROUND:	BRUCE Antibody: Apoptosis, or programmed cell death, is related to many diseases, such as cancer. Apoptosis is triggered by a variety of stimuli including members in the TNF family and can be prevented by the inhibitor of apoptosis (IAP) proteins. IAP proteins form a conserved gene family that binds to and inhibits cell death proteases. BRUCE, also known as BIRC6, is an IAP family member protein with a BIR (baculoviral inhibition of apoptosis protein repeat) domain and a UBCC (ubiquitin-conjugating enzyme E2, catalytic) domain. BRUCE regulates p53 and the mitochondrial pathway of apoptosis by facilitating the degradation of apoptotic proteins such as Caspase-9 and SMAC by ubiquitination.
REFERENCES:	1) Schimmer AD. Inhibitor of apoptosis proteins: translating basic knowledge into clinical practice. <i>Cancer Res.</i> 2004; 64:7183-90.
	2) Chen Z, Naito M, Hori S, et al. A human IAP-family gene, apollon, expressed in human brain cancer cells. <i>Biochem. Biophys. Res. Commun.</i> 1999; 264:847-54
	3) Hao Y, Sekine K, Kawabata A, et al. Apollon ubiquitinates SMAC and Caspase-9, and has an essential cytoprotection function. <i>Nat. Cell Biol.</i> 2004; 6:849-60.

ANTIBODIES FOR RESEARCH USE ONLY.

For additional information, visit ProSci's [Terms & Conditions Page](#).