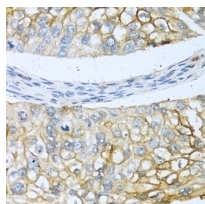


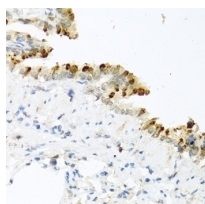


BMP4 Antibody

Cat. No.: 13-980



BMP4 Antibody



Immunohistochemistry of paraffin-embedded mouse lung using BMP4 antibody (13-980) at dilution of 1:100 (40x lens).

Ψ Specifications

HOST SPECIES:	Rabbit
SPECIES REACTIVITY:	Human, Mouse, Rat
IMMUNOGEN:	Recombinant fusion protein containing a sequence corresponding to amino acids 1-408 of human BMP4 (NP_570912.2).
TESTED APPLICATIONS:	IF, IHC, WB
APPLICATIONS:	WB: ,1:500 - 1:2000 IHC: ,1:50 - 1:200 IF: ,1:50 - 1:200

PURIFICATION:	Affinity purification
CLONALITY:	Polyclonal
ISOTYPE:	IgG
CONJUGATE:	Unconjugated
PHYSICAL STATE:	Liquid
BUFFER:	PBS with 0.02% sodium azide, 50% glycerol, pH7.3.
STORAGE CONDITIONS:	Store at -20 °C. Avoid freeze / thaw cycles.

Ψ Additional Info

OFFICIAL SYMBOL:	BMP4
ALTERNATE NAMES:	Bone morphogenetic protein, BMP2B, DVR4, Bone morphogenetic protein 4, Bone morphogenetic protein 2B, BMP-4, ZYME, OFC11, BMP2B1, MCOPS6
GENE ID:	652
USER NOTE:	Optimal dilutions for each application to be determined by the researcher.

Ψ Background and References

BACKGROUND:	This gene encodes a secreted ligand of the TGF-beta (transforming growth factor-beta) superfamily of proteins. Ligands of this family bind various TGF-beta receptors leading to recruitment and activation of SMAD family transcription factors that regulate gene expression. The encoded preproprotein is proteolytically processed to generate each subunit of the disulfide-linked homodimer. This protein regulates heart development and adipogenesis. Mutations in this gene are associated with orofacial cleft and microphthalmia in human patients. The encoded protein may also be involved in the pathology of multiple cardiovascular diseases and human cancers.
--------------------	---

ANTIBODIES FOR RESEARCH USE ONLY.

For additional information, visit ProSci's [Terms & Conditions Page](#).