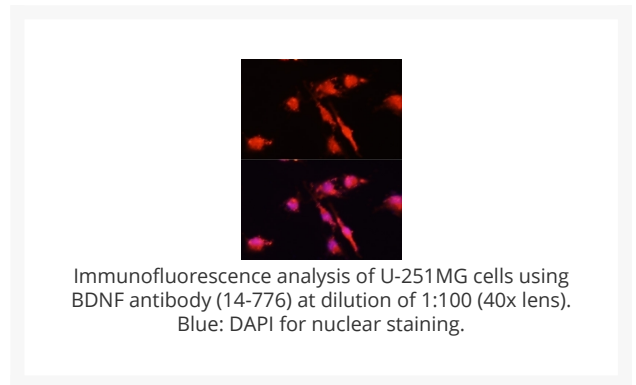
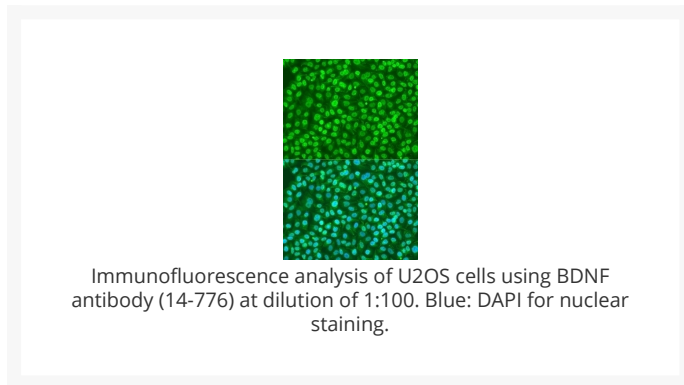
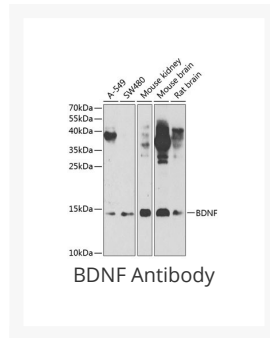




BDNF Antibody

Cat. No.: 14-776



Ψ Specifications

HOST SPECIES:	Rabbit
SPECIES REACTIVITY:	Human, Mouse, Rat
IMMUNOGEN:	Recombinant fusion protein containing a sequence corresponding to amino acids 20-247 of human BDNF (NP_733928.1).
TESTED APPLICATIONS:	IF, IHC, WB
APPLICATIONS:	WB: ,1:500 - 1:2000 IHC: ,1:50 - 1:200 IF: ,1:50 - 1:200

POSITIVE CONTROL:	1) A-549
	2) SW480
	3) Mouse kidney
	4) Mouse brain
	5) Rat brain
PREDICTED MOLECULAR WEIGHT:	Observed: 14kDa

Ψ Properties

PURIFICATION:	Affinity purification
CLONALITY:	Polyclonal
ISOTYPE:	IgG
CONJUGATE:	Unconjugated
PHYSICAL STATE:	Liquid
BUFFER:	PBS with 0.02% sodium azide, 50% glycerol, pH7.3.
STORAGE CONDITIONS:	Store at -20° C. Avoid freeze / thaw cycles.

Ψ Additional Info

OFFICIAL SYMBOL:	BDNF
ALTERNATE NAMES:	BDNF , brain-derived neurotrophic factor, MGC34632, neurotrophin
GENE ID:	627
USER NOTE:	Optimal dilutions for each application to be determined by the researcher.

Ψ Background and References

BACKGROUND:	<p>This gene encodes a member of the nerve growth factor family of proteins. Alternative splicing results in multiple transcript variants, at least one of which encodes a preproprotein that is proteolytically processed to generate the mature protein. Binding of this protein to its cognate receptor promotes neuronal survival in the adult brain. Expression of this gene is reduced in Alzheimer's, Parkinson's, and Huntington's disease patients. This gene may play a role in the regulation of the stress response and in the biology of mood disorders.</p>
--------------------	---

ANTIBODIES FOR RESEARCH USE ONLY.

For additional information, visit ProSci's [Terms & Conditions Page](#).