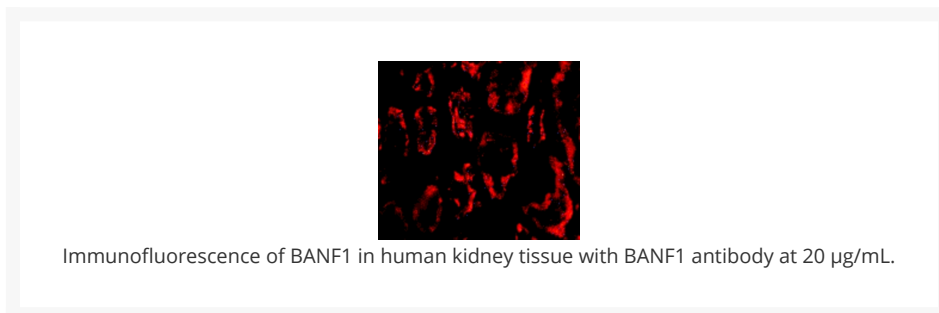
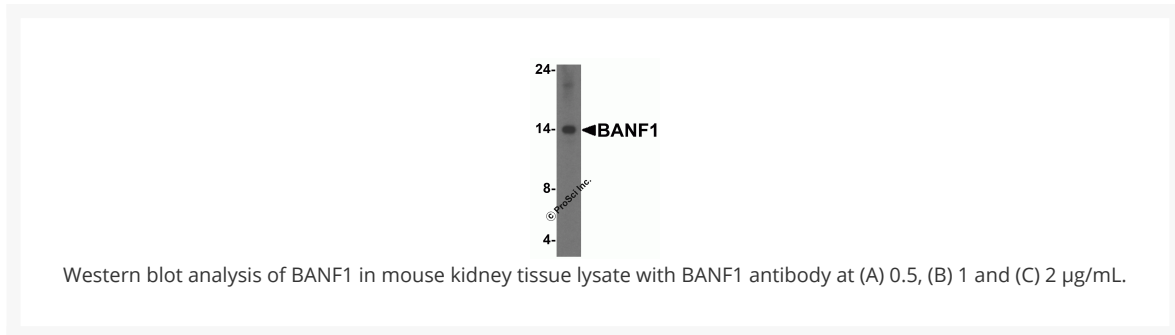




# BANF1 Antibody

Cat. No.: 4019



## Ψ Specifications

<b>HOST SPECIES:</b>	Rabbit
<b>SPECIES REACTIVITY:</b>	Human, Mouse, Rat
<b>HOMOLOGY:</b>	Predicted species reactivity based on immunogen sequence: Bovine: (100%)
<b>IMMUNOGEN:</b>	BANF1 antibody was raised against a 19 amino acid synthetic peptide from near the amino terminus of human BANF1.  The immunogen is located within the first 50 amino acids of BANF1.
<b>TESTED APPLICATIONS:</b>	ELISA, IF, WB

<b>APPLICATIONS:</b>	BANF1 antibody can be used for detection of BANF1 by Western blot at 0.5 - 2 µg/mL. Despite its predicted molecular weight, BANF1 often migrates at a higher size in SDS-PAGE. Antibody can also be used for immunofluorescence starting at 20 µg/mL.  Antibody validated: Western Blot in human samples and Immunofluorescence in human samples. All other applications and species not yet tested.
<b>POSITIVE CONTROL:</b>	1) Cat. No. 1201 - HeLa Cell Lysate
	2) Cat. No. 10-401 - Human Kidney Tissue Slide

## Ψ Properties

<b>PURIFICATION:</b>	BANF1 Antibody is affinity chromatography purified via peptide column.
<b>CLONALITY:</b>	Polyclonal
<b>ISOTYPE:</b>	IgG
<b>CONJUGATE:</b>	Unconjugated
<b>PHYSICAL STATE:</b>	Liquid
<b>BUFFER:</b>	BANF1 Antibody is supplied in PBS containing 0.02% sodium azide.
<b>CONCENTRATION:</b>	1 mg/mL
<b>STORAGE CONDITIONS:</b>	BANF1 antibody can be stored at 4 °C for three months and -20 °C, stable for up to one year. As with all antibodies care should be taken to avoid repeated freeze thaw cycles. Antibodies should not be exposed to prolonged high temperatures.

## Ψ Additional Info

<b>OFFICIAL SYMBOL:</b>	BANF1
<b>ALTERNATE NAMES:</b>	BANF1 Antibody: BAF, NGPS, BCRP1, D14S1460, BAF, BCRG1, Barrier-to-autointegration factor, Breakpoint cluster region protein 1
<b>ACCESSION NO.:</b>	AAH05942
<b>PROTEIN GI NO.:</b>	13543577
<b>GENE ID:</b>	8815
<b>USER NOTE:</b>	Optimal dilutions for each application to be determined by the researcher.

## Ψ Background and References

<b>BACKGROUND:</b>	BANF1 Antibody: Barrier-to-autointegration factor 1 (BANF1) is a conserved chromatin protein that non-specifically binds double-stranded DNA. BAF also interacts with a family of nuclear proteins that include LAP2, emerin, and MAN1. It is also a host cell component of retroviral pre-integration complexes (PICs), including that of HIV. BAF will bind to p55 Gag (the structural precursor of HIV-1 virions) as well as its cleaved product matrix. In addition to being a host cell component of the PIC, it is thought that BAF is also present at low levels in incoming virions, and thus might contribute to the assembly or activity of HIV-1 PICs through direct binding to matrix as well as DNA.
<b>REFERENCES:</b>	1) Furukawa K. LAP2 binding protein 1 (L2BP1/BAF) is a candidate mediator of LAP2-chromatin interaction. J. Cell Sci. 1999; 112:2485-92.
	2) Cai M, Huang Y, Ghirlando R, et al. Solution structure of the constant region of nuclear envelope protein LAP2 reveals two LEM-domain structures: one binds BAF and the other binds DNA. EMBO J. 2001; 20:4399-407.
	3) Chen H and Engelman A. The barrier-to-autointegration protein is a host factor for HIV type 1 integration. Proc. Natl. Acad. Sci. USA 1998; 95:15270-4.

**ANTIBODIES FOR RESEARCH USE ONLY.**

For additional information, visit ProSci's [Terms & Conditions Page](#).