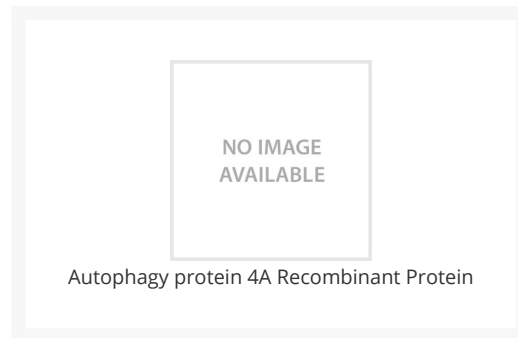




# Autophagy protein 4A Recombinant Protein

Cat. No.: 92-103



## Ψ Specifications

<b>SPECIES:</b>	Human
<b>SOURCE SPECIES:</b>	E. coli
<b>SEQUENCE:</b>	Met1-Val398
<b>FUSION TAG:</b>	N-6 His tag
<b>TESTED APPLICATIONS:</b>	
<b>APPLICATIONS:</b>	This recombinant protein can be used for biological assays. For research use only.
<b>PREDICTED MOLECULAR WEIGHT:</b>	47.5 kD

## Ψ Properties

<b>PURITY:</b>	Greater than 95% as determined by reducing SDS-PAGE. Endotoxin level less than 0.1 ng/ug (1 IEU/ug) as determined by LAL test.
<b>PHYSICAL STATE:</b>	Liquid
<b>BUFFER:</b>	Supplied as a 0.2 um filtered solution of 20mM PB, 150mM NaCl, pH7.4. It is not recommended to reconstitute to a concentration less than 100 ug/ml.

**STORAGE CONDITIONS:**

Store at -20°C, stable for 6 months after receipt.  
Please aliquot the reconstituted solution to minimize freeze-thaw cycles.

## Ψ Additional Info

---

<b>OFFICIAL SYMBOL:</b>	ATG4A
<b>ALTERNATE NAMES:</b>	Cysteine Protease ATG4A, AUT-Like 2 Cysteine Endopeptidase, Autophagin-2, Autophagy-Related Cysteine Endopeptidase 2, Autophagy-Related Protein 4 Homolog A, hAPG4A, ATG4A, APG4A, AUTL2
<b>ACCESSION NO.:</b>	Q8WYN0
<b>PROTEIN GI NO.:</b>	158257574
<b>GENE ID:</b>	115201

## Ψ Background and References

---

<b>BACKGROUND:</b>	Cysteine Protease ATG4A (ATG4A) is a cytoplasmic protein that belongs to the peptidase C54 family. ATG4A is widely expressed in many tissues at a low level, but the highest expression is observed in skeletal muscle and brain. ATG4A is a cysteine protease required for autophagy; it cleaves the C-terminal part of MAP1LC3, GABARAPL2 or GABARAP. ATG4A is inhibited by N-ethylmaleimide. It is suggested that ATG4A has a significant role in suppressing various cancers.
--------------------	---

### ANTIBODIES FOR RESEARCH USE ONLY.

For additional information, visit ProSci's [Terms & Conditions Page](#).