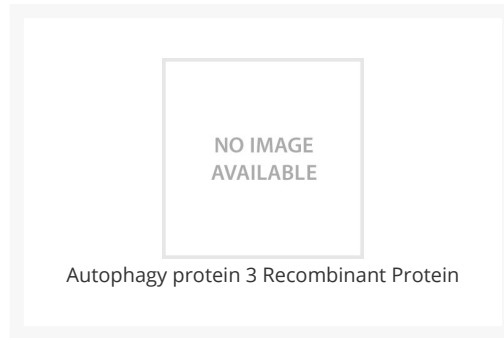




Autophagy protein 3 Recombinant Protein

Cat. No.: 91-995



Ψ Specifications

SPECIES:	Human
SOURCE SPECIES:	E. coli
SEQUENCE:	Met1-His287
FUSION TAG:	C-6 His, N-T7 tag
TESTED APPLICATIONS:	
APPLICATIONS:	This recombinant protein can be used for biological assays. For research use only.
PREDICTED MOLECULAR WEIGHT:	35 kD

Ψ Properties

PURITY:	Greater than 95% as determined by reducing SDS-PAGE. Endotoxin level less than 0.1 ng/ug (1 IEU/ug) as determined by LAL test.
PHYSICAL STATE:	Liquid
BUFFER:	Supplied as a 0.2 um filtered solution of 20mM PB, 150mM NaCl, pH 7.2. It is not recommended to reconstitute to a concentration less than 100 ug/ml.

STORAGE CONDITIONS:

Store at -20°C, stable for 6 months after receipt.
Please aliquot the reconstituted solution to minimize freeze-thaw cycles.

Ψ Additional Info

OFFICIAL SYMBOL:	ATG3
ALTERNATE NAMES:	Ubiquitin-Like-Conjugating Enzyme ATG3, Autophagy-Related Protein 3, APG3-Like, hApp3, Protein PC3-96, ATG3, APG3, APG3L
ACCESSION NO.:	Q9NT62
GENE ID:	64422

Ψ Background and References

BACKGROUND:	Ubiquitin-Like-Conjugating Enzyme ATG3 (ATG3) is widely expressed and has highly levels in heart, skeletal muscle, kidney, liver and placenta. ATG3 as a E2-like enzyme, involves in autophagy and mitochondrial homeostasis. ATG3 catalyzes the conjugation of ATG8-like proteins to PE which is essential for autophagy. As an autocatalytic E2-like enzyme, ATG3 also can catalyzes the conjugation of ATG12 to itself which paly a role in mitochondrial homeostasis but not in autophagy.
--------------------	--

ANTIBODIES FOR RESEARCH USE ONLY.

For additional information, visit ProSci's [Terms & Conditions Page](#).