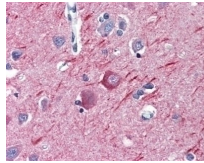




Alpha Tubulin Antibody [YOL1/34]

Cat. No.: 51-829



Alpha Tubulin Antibody [YOL1/34]

Ψ Specifications

HOST SPECIES:	Rat
SPECIES REACTIVITY:	Avian, Drosophila, Fungus, Human, Mammal, Yeast
IMMUNOGEN:	Yeast tubulin
TESTED APPLICATIONS:	ELISA, IHC, RIA, WB
APPLICATIONS:	Alpha Tubulin antibody can be used in immunohistochemistry starting at 10 µg/mL, immunoprecipitation starting at 2 - 10 µg/mL, and flow cytometry starting at 1:25 - 1:50.
SPECIFICITY:	Recognizes the alpha subunit of tubulin. This product is routinely tested in ELISA on Tubulin.

Ψ Properties

PURIFICATION:	Affinity Chromatography
CLONALITY:	Monoclonal
ISOTYPE:	IgG2a
CONJUGATE:	Unconjugated
PHYSICAL STATE:	Liquid
BUFFER:	PBS, 0.09% sodium azide.

CONCENTRATION:	1 mg/ml
STORAGE CONDITIONS:	Short term: 4 °C. Long term: Store at -20 °C. Avoid freeze-thaw cycles.

Additional Info

OFFICIAL SYMBOL:	TUB1
ALTERNATE NAMES:	Tubulin alpha-1 chain
ACCESSION NO.:	P09733
PROTEIN GI NO.:	1729835
GENE ID:	854889
USER NOTE:	Optimal dilutions for each application to be determined by the researcher.

Background and References

BACKGROUND:	Alpha Tubulin Antibody [YOL1/34]
--------------------	----------------------------------

ANTIBODIES FOR RESEARCH USE ONLY.

For additional information, visit ProSci's [Terms & Conditions Page](#).