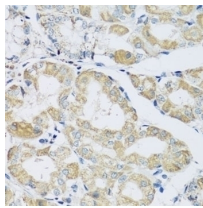
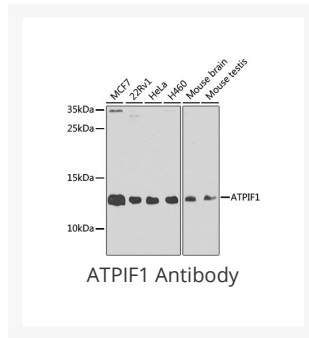


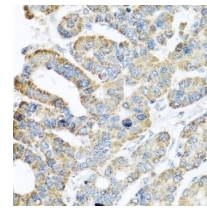


# ATPIF1 Antibody

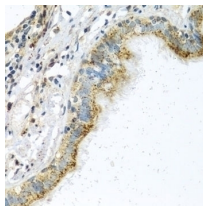
Cat. No.: 19-532



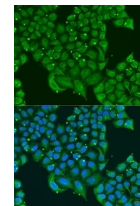
Immunohistochemistry of paraffin-embedded human stomach using ATPIF1 antibody (19-532) at dilution of 1:100 (40x lens).



Immunohistochemistry of paraffin-embedded human liver cancer using ATPIF1 antibody (19-532) at dilution of 1:100 (40x lens).



Immunohistochemistry of paraffin-embedded human trachea using ATPIF1 antibody (19-532) at dilution of 1:100 (40x lens).



Immunofluorescence analysis of U2OS cells using ATPIF1 antibody (19-532) at dilution of 1:100. Blue: DAPI for nuclear staining.

## $\Psi$ Specifications

<b>HOST SPECIES:</b>	Rabbit
----------------------	--------

<b>SPECIES REACTIVITY:</b>	Human, Mouse
<b>IMMUNOGEN:</b>	Recombinant fusion protein containing a sequence corresponding to amino acids 26-106 of human ATP1F1 (NP_057395.1).
<b>TESTED APPLICATIONS:</b>	IF, IHC, WB
<b>APPLICATIONS:</b>	WB: ,1:500 - 1:2000 IHC: ,1:50 - 1:100 IF: ,1:50 - 1:100
<b>POSITIVE CONTROL:</b>	1) MCF-7
	2) 22Rv1
	3) HeLa
	4) H460
	5) Mouse brain
<b>PREDICTED MOLECULAR WEIGHT:</b>	Observed: 12kDa

## Ψ Properties

<b>PURIFICATION:</b>	Affinity purification
<b>CLONALITY:</b>	Polyclonal
<b>ISOTYPE:</b>	IgG
<b>CONJUGATE:</b>	Unconjugated
<b>PHYSICAL STATE:</b>	Liquid
<b>BUFFER:</b>	PBS with 0.02% sodium azide, 50% glycerol, pH7.3.
<b>STORAGE CONDITIONS:</b>	Store at -20 °C. Avoid freeze / thaw cycles.

## Ψ Additional Info

<b>OFFICIAL SYMBOL:</b>	ATPIF1
<b>ALTERNATE NAMES:</b>	ATPIF1, ATP1, ATP1P, IP, MGC1167, MGC8898
<b>GENE ID:</b>	93974
<b>USER NOTE:</b>	Optimal dilutions for each application to be determined by the researcher.

## Ψ Background and References

**BACKGROUND:**

This gene encodes a mitochondrial ATPase inhibitor. Alternative splicing occurs at this locus and three transcript variants encoding distinct isoforms have been identified.

---

**ANTIBODIES FOR RESEARCH USE ONLY.**

For additional information, visit ProSci's [Terms & Conditions Page](#).