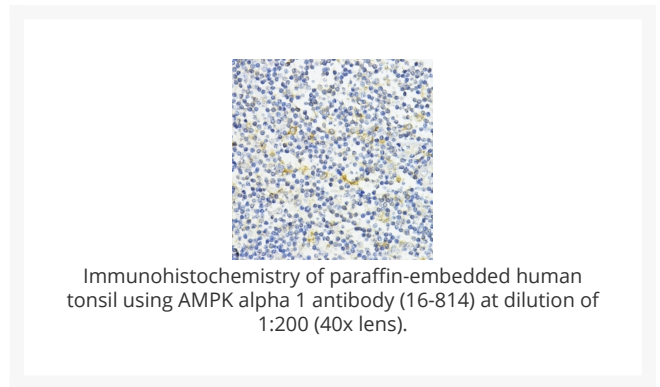
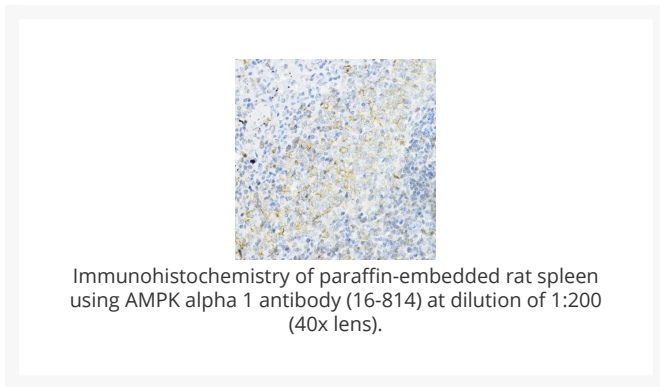
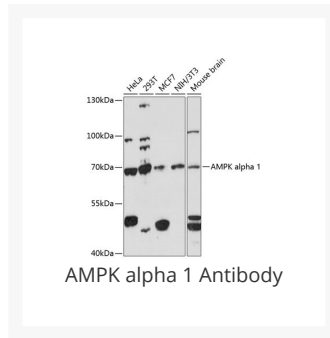




AMPK alpha 1 Antibody

Cat. No.: 16-814



Ψ Specifications

HOST SPECIES:	Rabbit
SPECIES REACTIVITY:	Human, Mouse, Rat
IMMUNOGEN:	A synthetic peptide of human AMPK alpha 1
TESTED APPLICATIONS:	IHC, WB
APPLICATIONS:	WB: ,1:500 - 1:2000 IHC: ,1:50 - 1:200
POSITIVE CONTROL:	1) HeLa 2) 293T

	3) MCF7
	4) NIH/3T3
	5) mouse brain
PREDICTED MOLECULAR WEIGHT:	Observed: 64kDa

Ψ Properties

PURIFICATION:	Affinity purification
CLONALITY:	Polyclonal
ISOTYPE:	IgG
CONJUGATE:	Unconjugated
PHYSICAL STATE:	Liquid
BUFFER:	PBS with 0.02% sodium azide, 50% glycerol, pH7.3.
STORAGE CONDITIONS:	Store at -20 °C. Avoid freeze / thaw cycles.

Ψ Additional Info

OFFICIAL SYMBOL:	PRKAA1
ALTERNATE NAMES:	PRKAA1, AMPK, AMPKa1, MGC33776, MGC57364
GENE ID:	5562
USER NOTE:	Optimal dilutions for each application to be determined by the researcher.

Ψ Background and References

BACKGROUND:	The protein encoded by this gene belongs to the ser/thr protein kinase family. It is the catalytic subunit of the 5'-prime-AMP-activated protein kinase (AMPK). AMPK is a cellular energy sensor conserved in all eukaryotic cells. The kinase activity of AMPK is activated by the stimuli that increase the cellular AMP/ATP ratio. AMPK regulates the activities of a number of key metabolic enzymes through phosphorylation. It protects cells from stresses that cause ATP depletion by switching off ATP-consuming biosynthetic pathways. Alternatively spliced transcript variants encoding distinct isoforms have been observed.
--------------------	---

ANTIBODIES FOR RESEARCH USE ONLY.

For additional information, visit ProSci's [Terms & Conditions Page](#).