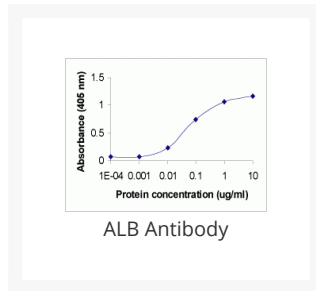




ALB Antibody

Cat. No.: XW-7023



Ψ Specifications

HOST SPECIES:	Chicken
SPECIES REACTIVITY:	Bovine, Dog, Human, Mouse, Porcine, Rat
IMMUNOGEN:	Full-length (plasma protein)
TESTED APPLICATIONS:	ELISA, WB
APPLICATIONS:	Albumin antibody can be used for the detection of Albumin by Western blot, ELISA, IP, may also work for IHC and ICC.
PREDICTED MOLECULAR WEIGHT:	69.4 kDa (calculated)

Ψ Properties

PURIFICATION:	Antigen affinity-purified
CLONALITY:	Polyclonal
CONJUGATE:	Unconjugated
PHYSICAL STATE:	Liquid
BUFFER:	Phosphate-Buffered Saline. No preservatives added.
CONCENTRATION:	1 mg/mL

STORAGE CONDITIONS:	ALB antibody can be stored at 4 °C for short term (weeks). Long term storage should be at -20 °C. As with all antibodies care should be taken to avoid repeated freeze thaw cycles. Antibodies should not be exposed to prolonged high temperatures.
----------------------------	--

Additional Info

OFFICIAL SYMBOL:	ALB
ALTERNATE NAMES:	Serum albumin, PRO0883, PRO0903, PRO1341, Albumin
ACCESSION NO.:	P02768
PROTEIN GI NO.:	113576
GENE ID:	213
USER NOTE:	Optimal dilutions for each application to be determined by the researcher.

Background and References

BACKGROUND:	Chicken polyclonal IgY antibodies against human serum albumin, antigen affinity-purified. Most abundant human plasma protein. M.W 66,000.
REFERENCES:	1) 1. Dugaiczky,A., Law,S. W. and Dennison,O. E. Nucleotide sequence and the encoded amino acids of human serum albumin mRNA. Proc. Natl. Acad. Sci. U. S. A. 79 (1), 71-75 (1982).

ANTIBODIES FOR RESEARCH USE ONLY.

For additional information, visit ProSci's [Terms & Conditions Page](#).