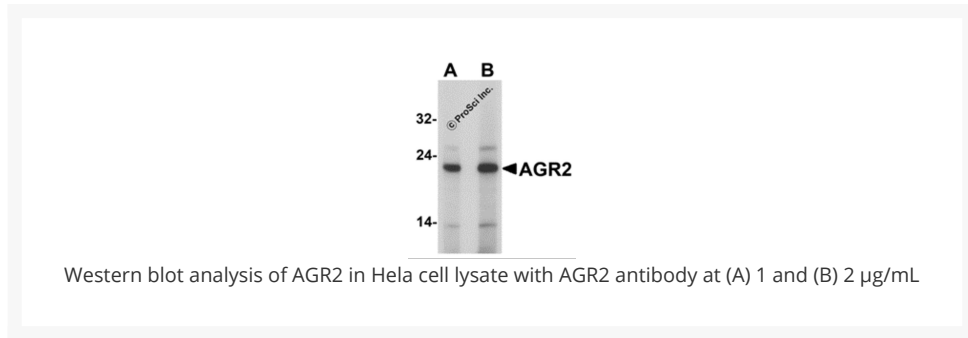




AGR2 Antibody

Cat. No.: 7247



Ψ Specifications

HOST SPECIES:	Rabbit
SPECIES REACTIVITY:	Human, Mouse
IMMUNOGEN:	Rabbit polyclonal AGR2 antibody was raised against a 17 amino acid peptide near the amino terminus of human AGR2. The immunogen is located within the first 50 amino acids of AGR2.
TESTED APPLICATIONS:	ELISA, IF, IHC-P, WB
APPLICATIONS:	AGR2 antibody can be used for detection of AGR2 by Western blot at 1 - 2 µg/mL. Antibody validated: Western Blot in human samples; Immunohistochemistry in human samples and Immunofluorescence in human samples. All other applications and species not yet tested.

SPECIFICITY:	Two isoforms of AGR2 exists as a result of alternative splicing event.
POSITIVE CONTROL:	1) Cat. No. 1201 - HeLa Cell Lysate
	2) Cat. No. 11-801 - Human Small Intestine Tissue Slide
PREDICTED MOLECULAR WEIGHT:	19 kDa

Properties

PURIFICATION:	AGR2 Antibody is affinity chromatography purified via peptide column.
CLONALITY:	Polyclonal
ISOTYPE:	IgG
CONJUGATE:	Unconjugated
PHYSICAL STATE:	Liquid
BUFFER:	AGR2 Antibody is supplied in PBS containing 0.02% sodium azide.
CONCENTRATION:	1 mg/mL
STORAGE CONDITIONS:	AGR2 antibody can be stored at 4 °C for three months and -20 °C, stable for up to one year.

Additional Info

OFFICIAL SYMBOL:	AGR2
ALTERNATE NAMES:	AGR2 Antibody: AG2, GOB-4, HAG-2, XAG-2, PDIA17, HEL-S-116, AG2, UNQ515/PRO1030, Anterior gradient protein 2 homolog, HPC8, AG-2
ACCESSION NO.:	NP_006399
PROTEIN GI NO.:	5453541
GENE ID:	10551
USER NOTE:	Optimal dilutions for each application to be determined by the researcher.

Background and References

BACKGROUND:	AGR2 Antibody: AGR2 (anterior gradient protein 2) and AGR3 are members of the anterior gradient homolog family. They are secreted cytoplasmic proteins which are involved in metastasis induction and p53 tumour suppressor inhibition. They may serve as molecular markers and potential therapeutic targets for hormone-responsive breast tumours. AGR2 is ubiquitously expressed with upregulated expression in prostate cancer, breast cancer, lung cancer, renal carcinomas and endometrial carcinomas. AGR2 expression is positively correlated with that of the estrogen receptor (ER) and is negatively correlated with that of the epidermal growth factor receptor (EGFR).
--------------------	--

REFERENCES:	1) Zhang JS, Gong A, Cheville JC, et al. AGR2, an androgen-inducible secretory protein overexpressed in prostate cancer. <i>Genes Chromosomes Cancer</i> 2005; 43:249-59.
	2) Zheng W, Rosenstiel P, Huse K, et al. Evaluation of AGR2 and AGR3 as candidate genes for inflammatory bowel disease. <i>Genes Immun.</i> 2006; 7:11-8.
	3) Gray TA, MacLaine NJ, Michie CO, et al. Anterior Gradient-3: a novel biomarker for ovarian cancer that mediates cisplatin resistance in xenograft models. <i>J. Immunol. Methods</i> 2012; 378:20-32.
	4) Darb-Esfahani S, Fritzsche F, Kristiansen G, et al. Anterior gradient protein 2 (AGR2) is an independent prognostic factor in ovarian high-grade serous carcinoma. <i>Virchows Arch.</i> 2012; 461:109-16.

ANTIBODIES FOR RESEARCH USE ONLY.

For additional information, visit ProSci's [Terms & Conditions Page](#).