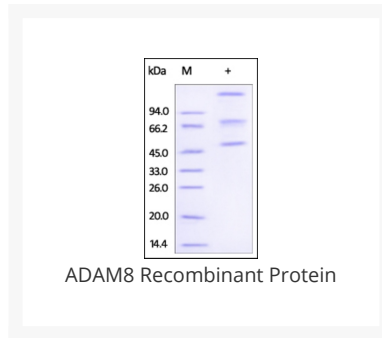




ADAM8 Recombinant Protein

Cat. No.: 96-013



Ψ Specifications

SPECIES:	Human
SOURCE SPECIES:	HEK293 cells
SEQUENCE:	Ile 17 - Leu 665
FUSION TAG:	His Tag
TESTED APPLICATIONS:	WB
APPLICATIONS:	This recombinant protein can be used for WB. For research use only.
PREDICTED MOLECULAR WEIGHT:	71.6 kDa

Ψ Properties

PURITY:	>85% as determined by SDS-PAGE.
PHYSICAL STATE:	Lyophilized
BUFFER:	50 mM Tris, 150 mM NaCl, 20 mM CaCl ₂ , pH7.5
STORAGE CONDITIONS:	Lyophilized Protein should be stored at -20 °C or lower for long term storage. Upon reconstitution, working aliquots should be stored at -20 °C or -70 °C. Avoid repeated freeze-thaw cycles.

OFFICIAL SYMBOL:	ADAM8
ALTERNATE NAMES:	ADAM8, MS2, CD156a
ACCESSION NO.:	AAI15405.1
GENE ID:	101

 Background and References

BACKGROUND:	Disintegrin and metalloproteinase domain-containing protein 8 is also known as ADAM8, Cell surface antigen MS2 and CD antigen CD156a, which belongs to the ADAM (a disintegrin and metalloprotease domain) family. ADAM family play a fundamental role in diverse processes such as asthma, development, angiogenesis and cancer through their activities in cell adhesion/fusion, membrane protein shedding, and signal transduction. ADAM8 / CD156a contains 1 disintegrin domain, 1 EGF-like domain and 1 peptidase M12B domain. ADAM8 / MS2 / CD156a is expressed on neutrophils and monocytes. ADAM8 / MS2 possible involvement in extravasation of leukocytes.
REFERENCES:	1) Yoshiyama K., et al., 1997, Genomics 41 (1): 56–62. 2) Hall T., et al., 2012, Acta Crystallogr. F 68:616-621.

ANTIBODIES FOR RESEARCH USE ONLY.

For additional information, visit ProSci's [Terms & Conditions Page](#).