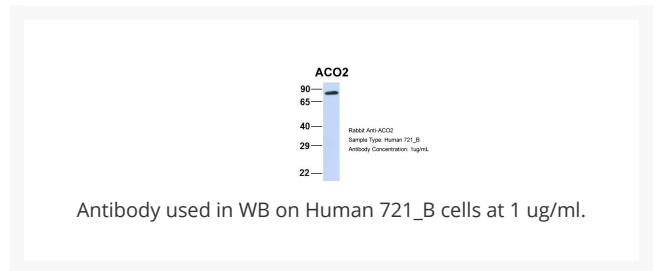
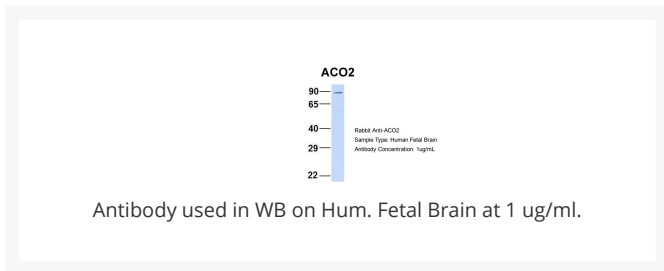
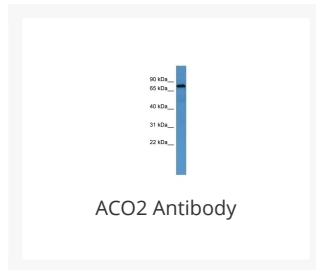




ACO2 Antibody

Cat. No.: 27-083



Ψ Specifications

HOST SPECIES:	Rabbit
SPECIES REACTIVITY:	C. elegans, Human, Mouse, Rat
IMMUNOGEN:	Antibody produced in rabbits immunized with a synthetic peptide corresponding a region of human ACO2.
TESTED APPLICATIONS:	ELISA, WB
APPLICATIONS:	ACO2 antibody can be used for detection of ACO2 by ELISA at 1:312500. ACO2 antibody can be used for detection of ACO2 by western blot at 1 µg/mL, and HRP conjugated secondary antibody should be diluted 1:50,000 - 100,000.
POSITIVE CONTROL:	1) 721_B Cell Lysate
PREDICTED MOLECULAR WEIGHT:	82 kDa

PURIFICATION:	Antibody is purified by peptide affinity chromatography method.
CLONALITY:	Polyclonal
CONJUGATE:	Unconjugated
PHYSICAL STATE:	Liquid
BUFFER:	Purified antibody supplied in 1x PBS buffer with 0.09% (w/v) sodium azide and 2% sucrose.
CONCENTRATION:	batch dependent
STORAGE CONDITIONS:	For short periods of storage (days) store at 4 °C. For longer periods of storage, store ACO2 antibody at -20 °C. As with any antibody avoid repeat freeze-thaw cycles.

Ψ Additional Info

OFFICIAL SYMBOL:	ACO2
ALTERNATE NAMES:	ACO2, ACONM, MGC20605, MGC33908, ICRD
ACCESSION NO.:	NP_001089
PROTEIN GI NO.:	4501867
GENE ID:	50
USER NOTE:	Optimal dilutions for each application to be determined by the researcher.

Ψ Background and References

BACKGROUND:	<p>ACO2 belongs to the aconitase/IPM isomerase family. It is an enzyme that catalyzes the interconversion of citrate to isocitrate via cis-aconitate in the second step of the TCA cycle. This protein is encoded in the nucleus and functions in the mitochondrion. It was found to be one of the mitochondrial matrix proteins that are preferentially degraded by the serine protease 15 (PRSS15), also known as Lon protease, after oxidative modification. The protein encoded by this gene belongs to the aconitase/IPM isomerase family. It is an enzyme that catalyzes the interconversion of citrate to isocitrate via cis-aconitate in the second step of the TCA cycle. This protein is encoded in the nucleus and functions in the mitochondrion. It was found to be one of the mitochondrial matrix proteins that are preferentially degraded by the serine protease 15 (PRSS15), also known as Lon protease, after oxidative modification. Publication Note: This RefSeq record includes a subset of the publications that are available for this gene. Please see the Entrez Gene record to access additional publications.</p>
REFERENCES:	1) Yu, Z., (2006) Prostate 66 (10), 1061-1069.

ANTIBODIES FOR RESEARCH USE ONLY.

For additional information, visit ProSci's [Terms & Conditions Page](#).