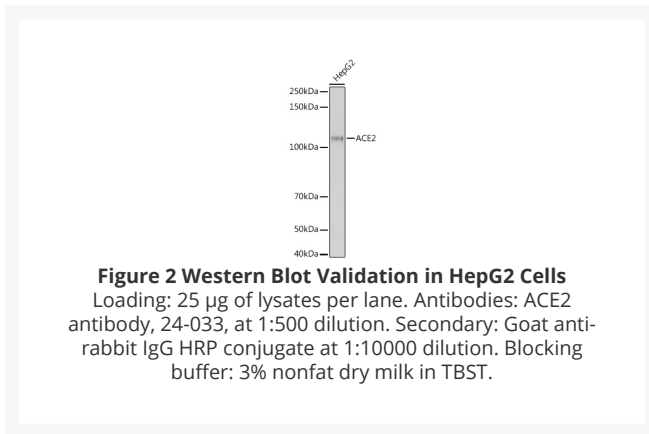
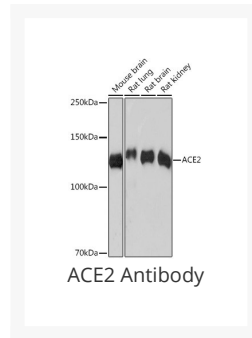




ACE2 Antibody

Cat. No.: 24-033



Ψ Specifications

HOST SPECIES:	Rabbit
SPECIES REACTIVITY:	Virus
IMMUNOGEN:	Synthetic Peptide
TESTED APPLICATIONS:	IHC, WB
APPLICATIONS:	WB: 1:500 - 1:2000, IHC: 1:50 - 1:200

Ψ Properties

PURIFICATION:	Affinity purification
CLONALITY:	Monoclonal
ISOTYPE:	IgG
CONJUGATE:	Unconjugated
PHYSICAL STATE:	Liquid
BUFFER:	PBS with 0.02% sodium azide, 50% glycerol, pH 7.3
STORAGE CONDITIONS:	Store at 4 °C short term. Aliquot and store at -20 °C long term. Avoid freeze-thaw cycles.

Additional Info

OFFICIAL SYMBOL:	ACE2
ALTERNATE NAMES:	ACEH, Angiotensin-converting enzyme 2, ACE-related carboxypeptidase, ACEH, SARS-CoV receptor, SARS-CoV-2 receptor
ACCESSION NO.:	Q9BYF1
GENE ID:	59272
USER NOTE:	Optimal dilutions for each application to be determined by the researcher.

Background and References

BACKGROUND:	The protein encoded by this gene belongs to the angiotensin-converting enzyme family of dipeptidyl carboxydipeptidases and has considerable homology to human angiotensin 1 converting enzyme. This secreted protein catalyzes the cleavage of angiotensin I into angiotensin 1-9, and angiotensin II into the vasodilator angiotensin 1-7. The organ- and cell-specific expression of this gene suggests that it may play a role in the regulation of cardiovascular and renal function, as well as fertility. In addition, the encoded protein is a functional receptor for the spike glycoprotein of the human coronaviruses SARS and HCoV-NL63. [provided by RefSeq, Jul 2008]
--------------------	--

ANTIBODIES FOR RESEARCH USE ONLY.

For additional information, visit ProSci's [Terms & Conditions Page](#).