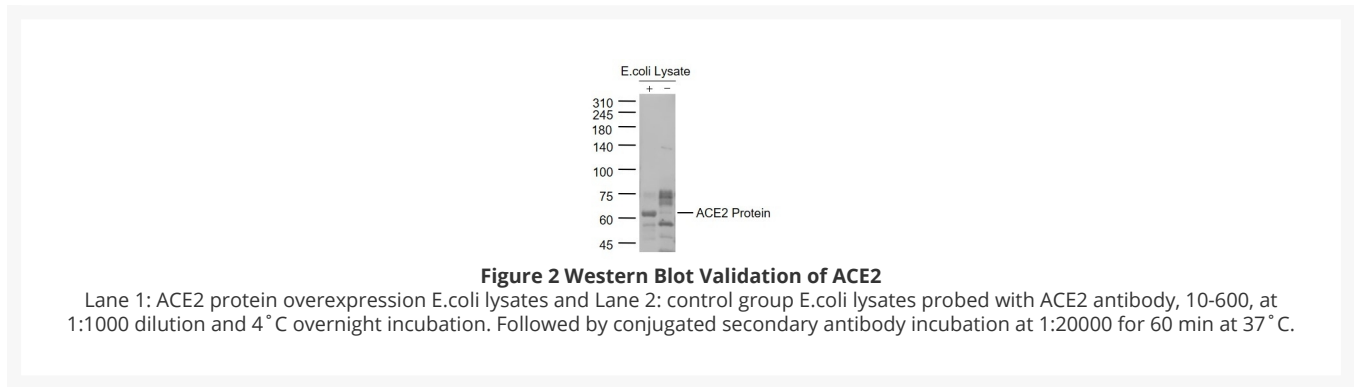
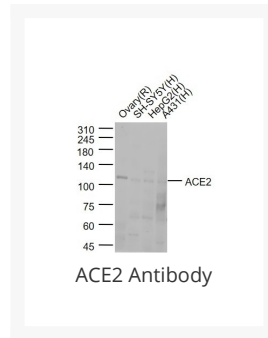




ACE2 Antibody

Cat. No.: 10-600



Ψ Specifications

HOST SPECIES:	Rabbit
SPECIES REACTIVITY:	Virus
IMMUNOGEN:	KLH synthetic peptide derived from human ACE2
TESTED APPLICATIONS:	IF, IHC-P, WB
APPLICATIONS:	WB(1:300-1000), IHC-P(1:200-400), IF(IHC-P)(1:50-200)

Ψ Properties

PURIFICATION:	Purified by Protein A.
CLONALITY:	Polyclonal
ISOTYPE:	IgG
CONJUGATE:	Unconjugated
PHYSICAL STATE:	Liquid
BUFFER:	0.01M TBS (pH7.4) with 1% BSA, 0.03% Proclin300 and 50% Glycerol
CONCENTRATION:	≥1 mg/mL
STORAGE CONDITIONS:	Store at 4 °C short term. Aliquot and store at -20 °C long term. Avoid freeze-thaw cycles.

Ψ Additional Info

OFFICIAL SYMBOL:	ACE2
ALTERNATE NAMES:	ACEH, Angiotensin-converting enzyme 2, ACE-related carboxypeptidase, Angiotensin-converting enzyme homolog, Metalloprotease MPROT15, ACE2, UNQ868/PRO1885
ACCESSION NO.:	Q9BYF1
GENE ID:	59272
USER NOTE:	Optimal dilutions for each application to be determined by the researcher.

Ψ Background and References

BACKGROUND:	Carboxypeptidase which converts angiotensin I to angiotensin 1-9, a peptide of unknown function, and angiotensin II to angiotensin 1-7, a vasodilator. Also able to hydrolyze apelin-13 and dynorphin-13 with high efficiency. May be an important regulator of heart function. In case of human coronaviruses SARS and HCoV-NL63 infections, serve as functional receptor for the spike glycoprotein of both coronaviruses.
--------------------	--

ANTIBODIES FOR RESEARCH USE ONLY.

For additional information, visit ProSci's [Terms & Conditions Page](#).