



ACE2 Antibody

Cat. No.: 10-531

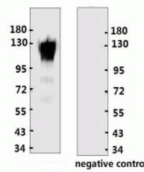


Figure 1 Western Blot Validation with Recombinant Protein

Loading: 1µg of ACE-2 recombinant protein, 10-014, per lane. Antibodies: ACE2 Antibody, 10-531, 1:2000. Secondary: Goat anti-rabbit IgG (H+L)-HRP conjugate at 1:20000 dilution.

Ψ Specifications

HOST SPECIES:	Rabbit
SPECIES REACTIVITY:	Virus
IMMUNOGEN:	ACE2 recombinant protein
TESTED APPLICATIONS:	ELISA, WB
APPLICATIONS:	WB: 1:2000-10000

Ψ Properties

PURIFICATION:	The antibody was affinity-purified from rabbit antiserum by affinity-chromatography using epitope-specific immunogen and the purity is > 95% (by SDS-PAGE).
CLONALITY:	Polyclonal
ISOTYPE:	IgG
CONJUGATE:	Unconjugated
PHYSICAL STATE:	Liquid
BUFFER:	PBS with 0.02% sodium azide, 10% glycerol, pH7.2

CONCENTRATION:	batch dependent
STORAGE CONDITIONS:	Store at 4 °C short term. Aliquot and store at -20 °C long term. Avoid freeze-thaw cycles.

Additional Info

OFFICIAL SYMBOL:	ACE2
ALTERNATE NAMES:	ACEH, Angiotensin-converting enzyme 2, ACE-related carboxypeptidase, ACEH, SARS-CoV receptor, SARS-CoV-2 receptor
ACCESSION NO.:	Q9BYF1
GENE ID:	59272
USER NOTE:	Optimal dilutions for each application to be determined by the researcher.

ANTIBODIES FOR RESEARCH USE ONLY.

For additional information, visit ProSci's [Terms & Conditions Page](#).