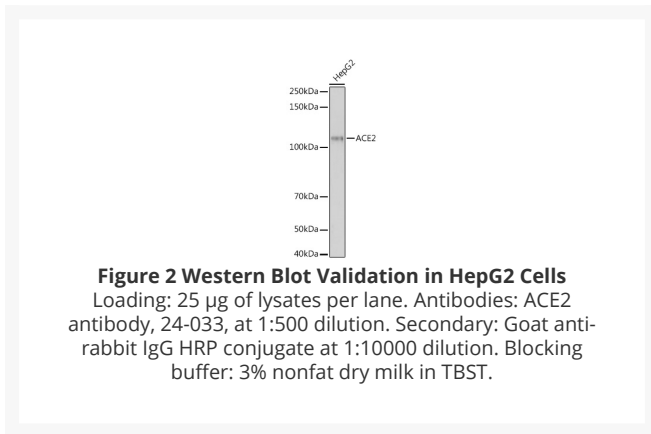
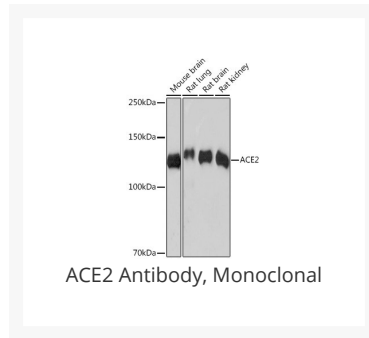




# ACE2 Antibody, Monoclonal

Cat. No.: 24-033



## Ψ Specifications

<b>HOST SPECIES:</b>	Rabbit
<b>SPECIES REACTIVITY:</b>	Virus
<b>IMMUNOGEN:</b>	Synthetic Peptide
<b>TESTED APPLICATIONS:</b>	IHC, WB
<b>APPLICATIONS:</b>	WB: 1:500 - 1:2000, IHC: 1:50 - 1:200

## Ψ Properties

<b>PURIFICATION:</b>	Affinity purification
<b>CLONALITY:</b>	Monoclonal
<b>ISOTYPE:</b>	IgG
<b>CONJUGATE:</b>	Unconjugated
<b>PHYSICAL STATE:</b>	Liquid
<b>BUFFER:</b>	PBS with 0.02% sodium azide, 50% glycerol, pH 7.3
<b>STORAGE CONDITIONS:</b>	Store at 4 °C short term. Aliquot and store at -20 °C long term. Avoid freeze-thaw cycles.

## Additional Info

<b>OFFICIAL SYMBOL:</b>	ACE2
<b>ALTERNATE NAMES:</b>	ACEH, Angiotensin-converting enzyme 2, ACE-related carboxypeptidase, ACEH, SARS-CoV receptor, SARS-CoV-2 receptor
<b>ACCESSION NO.:</b>	Q9BYF1
<b>GENE ID:</b>	59272
<b>USER NOTE:</b>	Optimal dilutions for each application to be determined by the researcher.

## Background and References

<b>BACKGROUND:</b>	The protein encoded by this gene belongs to the angiotensin-converting enzyme family of dipeptidyl carboxydipeptidases and has considerable homology to human angiotensin 1 converting enzyme. This secreted protein catalyzes the cleavage of angiotensin I into angiotensin 1-9, and angiotensin II into the vasodilator angiotensin 1-7. The organ- and cell-specific expression of this gene suggests that it may play a role in the regulation of cardiovascular and renal function, as well as fertility. In addition, the encoded protein is a functional receptor for the spike glycoprotein of the human coronaviruses SARS and HCoV-NL63. [provided by RefSeq, Jul 2008]
--------------------	--

### **ANTIBODIES FOR RESEARCH USE ONLY.**

For additional information, visit ProSci's [Terms & Conditions Page](#).