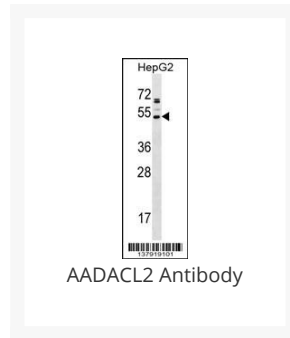




AADACL2 Antibody

Cat. No.: 59-156



Ψ Specifications

HOST SPECIES:	Rabbit
SPECIES REACTIVITY:	Human
IMMUNOGEN:	This AADACL2 antibody is generated from rabbits immunized with a KLH conjugated synthetic peptide between 156-182 amino acids from the Central region of human AADACL2.
TESTED APPLICATIONS:	WB
APPLICATIONS:	For WB starting dilution is: 1:1000
PREDICTED MOLECULAR WEIGHT:	46 kDa

Ψ Properties

PURIFICATION:	This antibody is purified through a protein A column, followed by peptide affinity purification.
CLONALITY:	Polyclonal
ISOTYPE:	Rabbit Ig
CONJUGATE:	Unconjugated

PHYSICAL STATE:	Liquid
BUFFER:	Supplied in PBS with 0.09% (W/V) sodium azide.
CONCENTRATION:	batch dependent
STORAGE CONDITIONS:	Store at 4 °C for three months and -20 °C, stable for up to one year. As with all antibodies care should be taken to avoid repeated freeze thaw cycles. Antibodies should not be exposed to prolonged high temperatures.

Additional Info

OFFICIAL SYMBOL:	AADACL2
ALTERNATE NAMES:	Arylacetamide deacetylase-like 2, 311-, AADACL2
ACCESSION NO.:	Q6P093
PROTEIN GI NO.:	269849709
GENE ID:	344752
USER NOTE:	Optimal dilutions for each application to be determined by the researcher.

Background and References

BACKGROUND:	AADACL2 has hydrolase activity and is involved in drug metabolism.
REFERENCES:	1) Lamesch, P., et al. Genomics 89(3):307-315(2007)
	2) Toulza, E., et al. Genome Biol.(6), R107 (2007) :

ANTIBODIES FOR RESEARCH USE ONLY.

For additional information, visit ProSci's [Terms & Conditions Page](#).