



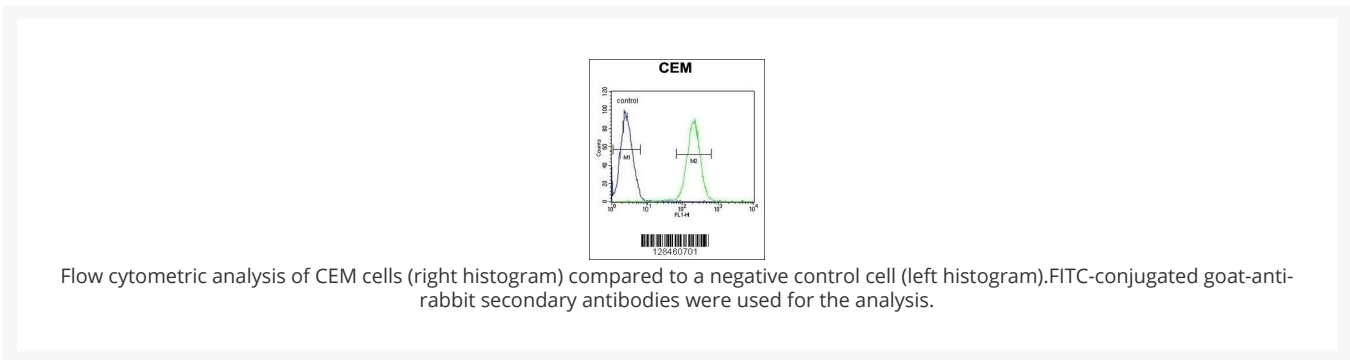
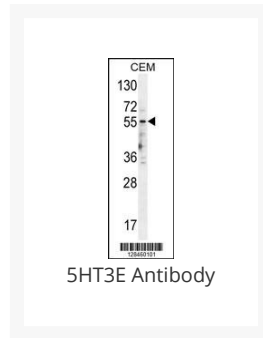
**ProSci Incorporated**  
12170 Flint Place  
Poway, CA 92064

**Toll Free:** +1 (888) 513 9525  
**Local:** +1 (858) 513 2638  
**Fax:** +1 (858) 513 2692

techsupport@prosci-inc.com

# 5HT3E Antibody

Cat. No.: 55-244



## Ψ Specifications

<b>HOST SPECIES:</b>	Rabbit
<b>SPECIES REACTIVITY:</b>	Human
<b>IMMUNOGEN:</b>	This 5HT3E antibody is generated from rabbits immunized with a KLH conjugated synthetic peptide between 126-154 amino acids from the Central region of human 5HT3E.
<b>TESTED APPLICATIONS:</b>	Flow, WB
<b>APPLICATIONS:</b>	For WB starting dilution is: 1:1000 For FACS starting dilution is: 1:10~50
<b>PREDICTED MOLECULAR WEIGHT:</b>	51 kDa

<b>PURIFICATION:</b>	This antibody is purified through a protein A column, followed by peptide affinity purification.
<b>CLONALITY:</b>	Polyclonal
<b>ISOTYPE:</b>	Rabbit Ig
<b>CONJUGATE:</b>	Unconjugated
<b>PHYSICAL STATE:</b>	Liquid
<b>BUFFER:</b>	Supplied in PBS with 0.09% (W/V) sodium azide.
<b>CONCENTRATION:</b>	batch dependent
<b>STORAGE CONDITIONS:</b>	Store at 4 °C for three months and -20 °C, stable for up to one year. As with all antibodies care should be taken to avoid repeated freeze thaw cycles. Antibodies should not be exposed to prolonged high temperatures.

## Ψ Additional Info

<b>OFFICIAL SYMBOL:</b>	HTR3E
<b>ALTERNATE NAMES:</b>	5-hydroxytryptamine receptor 3E, 5-HT3-E, 5-HT3E, Serotonin receptor 3E, HTR3E
<b>ACCESSION NO.:</b>	A5X5Y0
<b>GENE ID:</b>	285242
<b>USER NOTE:</b>	Optimal dilutions for each application to be determined by the researcher.

## Ψ Background and References

<b>BACKGROUND:</b>	The product of this gene belongs to the ligand-gated ion channel receptor superfamily. HTR3E encodes a subunit E of the type 3 receptor for 5-hydroxytryptamine (serotonin), a biogenic hormone that functions as a neurotransmitter, a hormone, and a mitogen. This receptor causes fast, depolarizing responses in neurons after activation. Genes encoding subunits C, D and E form a cluster on chromosome 3. An alternative splice variant has been described but its full length sequence has not been determined.
<b>REFERENCES:</b>	1) Walstab, J., et al. J. Biol. Chem. 285(35):26956-26965(2010)
	2) Hammer, C., et al. Pharmacogenomics 11(7):943-950(2010)
	3) Lennertz, L., et al. Eur Neuropsychopharmacol 20(6):414-420(2010)
	4) Goecke, T.W., et al. Acta Obstet Gynecol Scand 89(1):7-14(2010)

### ANTIBODIES FOR RESEARCH USE ONLY.

For additional information, visit ProSci's [Terms & Conditions Page](#).