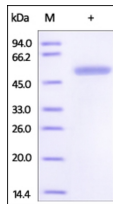




14-3-3 Beta Recombinant Protein

Cat. No.: 96-781



The purity of rh YWHAB / KCIP-1, GST Tag was determined by DTT-reduced (+) SDS-PAGE and staining overnight with Coomassie Blue.

Ψ Specifications

SPECIES:	Human
SOURCE SPECIES:	E. coli
FUSION TAG:	N-GST Tag
TESTED APPLICATIONS:	WB
APPLICATIONS:	This recombinant protein can be used for WB. For research use only.
PREDICTED MOLECULAR WEIGHT:	55 kDa

Ψ Properties

PURITY:	>95% as determined by SDS-PAGE.
PHYSICAL STATE:	Lyophilized
BUFFER:	50 mM Tris, 150 mM NaCl, pH 7.4
STORAGE CONDITIONS:	Lyophilized Protein should be stored at -20 °C or lower for long term storage. Upon reconstitution, working aliquots should be stored at -20 °C or -70 °C. Avoid repeated freeze-thaw cycles.

OFFICIAL SYMBOL:	YWHAB
ALTERNATE NAMES:	YWHAB, KCIP-1, 14-3-3 beta, GW128, HS1
ACCESSION NO.:	NP_647539
GENE ID:	7529

 Background and References

BACKGROUND:	Tyrosine 3-monooxygenase/tryptophan 5-monooxygenase activation protein, beta polypeptide (YWHAB) is also known as 14-3-3 protein beta, GW128, HS1. YWHAB belongs to the 14-3-3 family. YWHAB binds to a large number of partners, usually by recognition of a phosphoserine or phosphothreonine motif. Binding generally results in the modulation of the activity of the binding partner. YWHAB is negative regulator of osteogenesis. YWHAB blocks the nuclear translocation of the phosphorylated form (by AKT1) of SRPK2 and antagonizes its stimulatory effect on cyclin D1 expression resulting in blockage of neuronal apoptosis elicited by SRPK2.
REFERENCES:	1) Liu Y., et al., 2007, Mol. Endocrinol. 21:3050-3061. 2) Jang S.W., et al., 2009, J. Biol. Chem. 284:24512-24525.

ANTIBODIES FOR RESEARCH USE ONLY.

For additional information, visit ProSci's [Terms & Conditions Page](#).