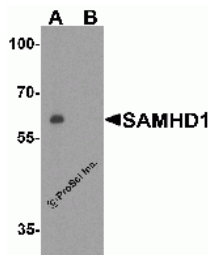




SAMHD1 Peptide

Cat. No.: 8007P



Western blot analysis of SAMHD1 in Daudi cell lysate with SAMHD1 antibody at 1 ug/ml in (A) the absence and (B) the presence of blocking peptide.

Ψ SPECIFICATIONS

LOCATION:	18 amino acid peptide near the carboxy terminus of human SAMHD1.
SPECIES:	Human
TESTED APPLICATIONS:	Blocking
APPLICATIONS:	SAMHD1 peptide is used for blocking the activity of SAMHD1 antibody.

Ψ PROPERTIES

ALTERNATE NAMES:	SAM domain and HD domain 1, DCIP, CHBL2, HDDC1, MOP-5, SBB188
ACCESSION NO.:	NP_056289
PROTEIN GI NO.:	38016914
PHYSICAL STATE:	Liquid
BUFFER:	PBS pH 7.2 (10 mM NaH ₂ PO ₄ , 10 mM Na ₂ HPO ₄ , 130 mM NaCl) containing 0.1% bovine serum albumin and 0.02% sodium azide
CONCENTRATION:	200 ug/mL
STORAGE CONDITIONS:	Store SAMHD1 peptide at -20°C, stable for one year.

Ψ ADDITIONAL INFO

ALTERNATE NAMES:	SAM domain and HD domain 1, DCIP, CHBL2, HDDC1, MOP-5, SBB188
ACCESSION NO.:	NP_056289
PROTEIN GI NO.:	38016914
OFFICIAL SYMBOL:	SAMHD1
GENE ID:	25939

FOR RESEARCH USE ONLY.

For additional information, visit ProSci's [Terms & Conditions Page](#).

