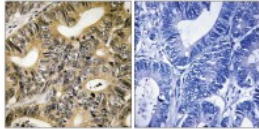




4E-BP1 (phospho Thr70) Antibody

Cat. No.: 79-891



Immunohistochemical analysis of paraffin-embedded human colon carcinoma tissue using 4E-BP1 (Phospho-Thr70) antibody (left) or the same antibody preincubated with blocking peptide (right).

Ψ SPECIFICATIONS

HOST SPECIES:	Rabbit
SPECIES REACTIVITY:	Human
IMMUNOGEN:	4E-BP1 (phospho Thr70) antibody was raised against a peptide sequence around phosphorylation site of threonine70 (T-K-T (p)-P-P) derived from Human 4E-BP1.
TESTED APPLICATIONS:	IHC
SPECIFICITY:	The antibody detects endogenous levels of 4E-BP1 only when phosphorylated at threonine 70.
PREDICTED MOLECULAR WEIGHT:	12 kDa

Ψ PROPERTIES

PURIFICATION:	Antibodies were purified by affinity-chromatography using epitope-specific peptide.
CLONALITY:	Polyclonal
ISOTYPE:	IgG
CONJUGATE:	Unconjugated
PHYSICAL STATE:	Liquid
BUFFER:	Antibody supplied in phosphate buffered saline (without Mg ²⁺ and Ca ²⁺), pH 7.4, 150mM NaCl, 0.02% sodium azide and 50% glycerol.
CONCENTRATION:	1 mg/mL
STORAGE CONDITIONS:	Store antibody at -20°C for up to one year.

Ψ ADDITIONAL INFO

OFFICIAL SYMBOL:	EIF4EBP1
ALTERNATE NAMES:	4EBP1, P/OKCL6, P/OKCL.6, PHAS-I
ACCESSION NO.:	NP_004086.1
PROTEIN GI NO.:	4758258
GENE ID:	1978

Ψ BACKGROUND AND REFERENCES

BACKGROUND:	4E-BP1 encodes one member of a family of translation repressor proteins. The protein directly interacts with eukaryotic translation initiation factor 4E (eIF4E), which is a limiting component of the multisubunit complex that recruits 40S ribosomal subunits to the 5' end of mRNAs. Interaction of this protein with eIF4E inhibits complex assembly and represses translation. This protein is phosphorylated in response to various signals including UV irradiation and insulin signaling, resulting in its dissociation from eIF4E and activation of mRNA translation.
REFERENCES:	1) Pause A., Nature 371:762-767(1994). 2) Gevaert K., Nat. Biotechnol. 21:566-569(2003). 3) Haghighat A., EMBO J. 14:5701-5709(1995).

ANTIBODIES FOR RESEARCH USE ONLY.

For additional information, visit ProSci's [Terms & Conditions Page](#).

