

YWHAE Recombinant Protein

CATALOG NO.: XW-RP3294

BACKGROUND:

This protein belongs to the 14-3-3 family of proteins which mediate signal transduction by binding to phosphoserine-containing proteins. This highly conserved protein family is found in both plants and mammals, and this protein is 100% identical to the mouse ortholog. It interacts with CDC25 phosphatases, RAF1 and IRS1 proteins, suggesting its role in diverse biochemical activities related to signal transduction, such as cell division and regulation of insulin sensitivity. It has also been implicated

SOURCE: E. coli

PURITY: 95%

BUFFER: 10 mM Tris, pH 8.0, 0.002% NaN₃, 3mM NaCl, 2.5mM

FUSION PARTNER: His-Tag at N terminus

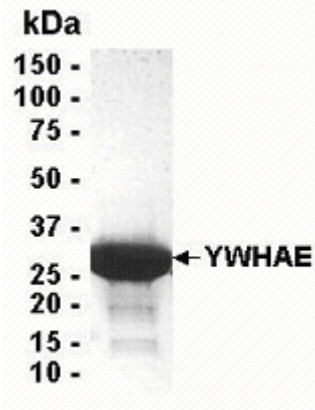
DOMAIN: aa. 1-255

MOLECULAR WEIGHT: 29.3 kDa (Calculated)

PROTEIN GI #: 5803225

PROTEIN ACCESSION #: NP_006752

TESTED APPLICATION: WB,E,MS



SDS PAGE: Analysis of YWHAE Recombinant Protein. 4-20% SDS gradient gel. Coomassie blue staining.

STORAGE: Store at -70°C. As with any protein, exposing YWHAE recombinant protein to repeated freeze/thaw cycles is not recommended. When working with proteins care should be taken to keep recombinant protein at a cool and stable temperature.

During shipment, small volumes of YWHAE recombinant protein will occasionally become entrapped in the seal of the product vial. For products with volumes of 200 μ L or less, we recommend gently tapping the vial on a hard surface or briefly centrifuging the vial in a tabletop centrifuge to dislodge any liquid in the container's cap. **For research use only.**