

## WHSC2 Recombinant Protein

**CATALOG NO.:** XW-RP3289

**BACKGROUND:**

WHSC2 is expressed ubiquitously with higher levels in fetal than in adult tissues. The protein is found to be capable of reacting with HLA-A2-restricted and tumor-specific cytotoxic T lymphocytes, suggesting a target for use in specific immunotherapy for a large number of cancer patients. This protein has also been shown to be a member of the NELF (negative elongation factor) protein complex that participates in the regulation of RNA polymerase II transcription elongation.

**SOURCE:** E. coli

**PURITY:** ~90%

**BUFFER:** 10 mM Tris, pH 8.0, 0.1% Triton X-100, 0.002% NaN<sub>3</sub>, 10mM DTT

**FUSION PARTNER:** T7 tag at N-terminus

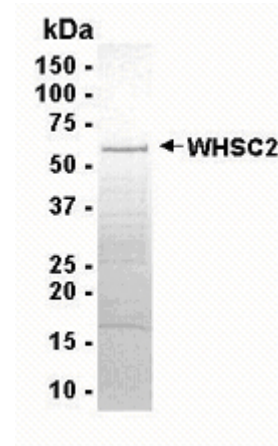
**DOMAIN:** aa. 1-525

**MOLECULAR WEIGHT:** 60.4 kDa (Calculated)

**PROTEIN GI #:** 19913363

**PROTEIN ACCESSION #:** NP\_005654

**TESTED APPLICATION:** WB,E,MS



**SDS PAGE:** Analysis of WHSC2 Recombinant Protein. 4-20% SDS gradient gel. Coomassie blue staining.

**STORAGE:** Store at -70°C. As with any protein, exposing WHSC2 recombinant protein to repeated freeze/thaw cycles is not recommended. When working with proteins care should be taken to keep recombinant protein at a cool and stable temperature.

During shipment, small volumes of WHSC2 recombinant protein will occasionally become entrapped in the seal of the product vial. For products with volumes of 200 µL or less, we recommend gently tapping the vial on a hard surface or briefly centrifuging the vial in a tabletop centrifuge to dislodge any liquid in the container's cap. **For research use only.**