

TSSC4 Recombinant Protein

CATALOG NO.: XW-RP3276

BACKGROUND:

This gene is one of several tumor-suppressing subtransferable fragments located in the imprinted gene domain of 11p15.5, an important tumor-suppressor gene region. Alterations in this region have been associated with the Beckwith-Wiedemann syndrome, Wilms tumor, rhabdomyosarcoma, adrenocortical carcinoma, and lung, ovarian, and breast cancer. This gene is located among several imprinted genes; however, this gene, as well as the pan-hematopoietic expression gene (PHEMX), escapes imprinting. This gene may play a role in malignancies and disease that involve this region.

SOURCE: E. coli

PURITY: ~90%

BUFFER: 10 mM Tris, pH 8.0, 0.002% NaN₃, 3mM NaCl, 2.5mM

FUSION PARTNER: His-tag at N-terminus

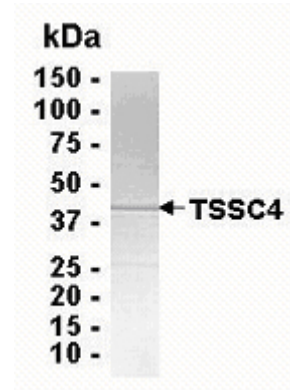
DOMAIN: aa. 1-329

MOLECULAR WEIGHT: 37.8 kDa (Calculated)

PROTEIN GI #: 21071006

PROTEIN ACCESSION #: NP_005697

TESTED APPLICATION: WB,E,MS



SDS PAGE: Analysis of TSSC4 Recombinant Protein. 4-20% SDS gradient gel. Coomassie blue staining.

STORAGE: Store at -70°C. As with any protein, exposing TSSC4 recombinant protein to repeated freeze/thaw cycles is not recommended. When working with proteins care should be taken to keep recombinant protein at a cool and stable temperature.

During shipment, small volumes of TSSC4 recombinant protein will occasionally become entrapped in the seal of the product vial. For products with volumes of 200 µL or less, we recommend gently tapping the vial on a hard surface or briefly centrifuging the vial in a tabletop centrifuge to dislodge any liquid in the container's cap. **For research use only.**